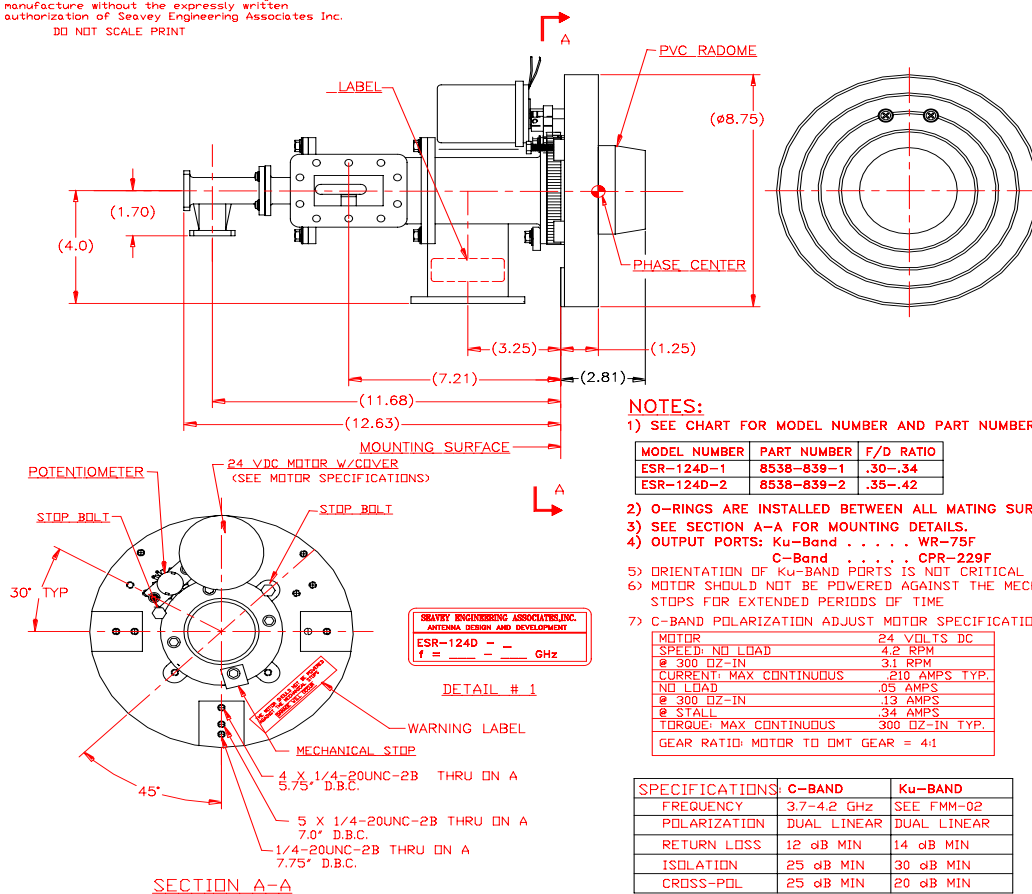


4 Port C/Ku Band Motorized Prime Focus Feed (#FEED-SVY-ESR124D)



Your Trusted Source for Satellite Equipment

These drawings and specifications are the property of Seavey Engineering Associates, Inc. and shall not be used as the basis of design or manufacture without the expressly written authorization of Seavey Engineering Associates Inc.
DO NOT SCALE PRINT



NOTES:

1) SEE CHART FOR MODEL NUMBER AND PART NUMBER

MODEL NUMBER	PART NUMBER	F/D RATIO
ESR-124D-1	8538-839-1	.30-.34
ESR-124D-2	8538-839-2	.35-.42

2) O-RINGS ARE INSTALLED BETWEEN ALL MATING SURFACES

3) SEE SECTION A-A FOR MOUNTING DETAILS.

4) OUTPUT PORTS: Ku-Band WR-75F

C-Band CPR-229F

5) ORIENTATION OF KU-BAND PORTS IS NOT CRITICAL

6) MOTOR SHOULD NOT BE POWERED AGAINST THE MECHANICAL STOPS FOR EXTENDED PERIODS OF TIME

7) C-BAND POLARIZATION ADJUST MOTOR SPECIFICATIONS:

MOTOR	24 VOLTS DC
SPEED: NO LOAD	4.2 RPM
@ 300 OZ-IN	3.1 RPM
CURRENT: MAX CONTINUOUS	.210 AMPS TYP.
NO LOAD	.05 AMPS
@ 300 OZ-IN	.13 AMPS
@ STALL	.34 AMPS
TORQUE: MAX CONTINUOUS	300 OZ-IN TYP.
GEAR RATIO: MOTOR TO DMT GEAR	= 4:1

SPECIFICATIONS:	C-BAND	Ku-BAND
FREQUENCY	3.7-4.2 GHz	SEE FMM-02
POLARIZATION	DUAL LINEAR	DUAL LINEAR
RETURN LOSS	12 dB MIN	14 dB MIN
ISOLATION	25 dB MIN	30 dB MIN
CROSS-POL	25 dB MIN	20 dB MIN

DATE	REV	DESCRIPTION	BY	DATE	APPROVED
03-28-96	A	ORIGINAL ISSUE	RF	03-28-96	JB
03-21-96	B	C-BAND RETURN LOSS	RF	03-21-96	JB
03-21-96	C	RELEASER NOTE # 2	RF	03-21-96	JB
10-24-97	D	REL. S/C FROM LABEL	JB	10-24-97	JB
12-06-02	E	UPDATE TO CURRENT	RF	12-06-02	JB

CHROMATE PER MIL-C-5541	CLASS 1A
MATERIAL	FEED: ALUM HARDWARE: STEEL
REMOVE ALL BURRS AND SHARP EDGES	DO NOT SCALE DRAWING
VISCOMPHSHIP SHALL BE IN ACCORDANCE	WITH MIL-STD-454, RECT 9.
UNLESS OTHERWISE SPECIFIED DIMENSIONS ARE IN INCHES	
ANGLES	SEE DIA TOLERANCES
±1°	.0135-.250 .002 .251-.500 .003 .501-1.000 .005
LINEAR	.X = ±.06 XX = ±.02 XXX = ±.010
DRAWN: R. FREILUND	DATE: 03-28-96
CHECKED: DATE:	
PROV. ENG. DATE:	
FILED: D. P. BARBUTTI	DATE: 03-04-96
DRG. DEPT. DATE:	
O.A. DEPT: HERBERT	DATE: 03-04-96

MODEL ESR-124D FEED	
(WITH POTENTIOMETER)	
REV	REV
C 60173	8538-839
REV	REV

FEED-SVY-ESR124D_REV002
Specifications are subject to change without notice