



MFC

Microwave Filter Company, Inc.

Creating Filters and Components to 50 Ghz for Over 50 Years!

Ideal for eliminating interference from WiMAX, RADAR and virtually any other potential source of out-of-band interference.

The model 13961W combines innovative design techniques with the solid performance of its renowned predecessor (model 13961).

No other manufacturer's C-band interference elimination filter offers all of these features:

Length:	5.49" (13.9 cm)
Weight:	1.125 lbs (0.51 kg)
Passband VSWR:	1.44:1 Typ; 1.5:1 Max
Group Delay Variation:	7 nS Max
Rejection :	45 dB Min @ 3.65 GHz / 4.25 GHz 60 dB Typ @ 3.55 GHz / 4.35 GHz 70 dB Typ @ 3.50 GHz / 4.40 GHz

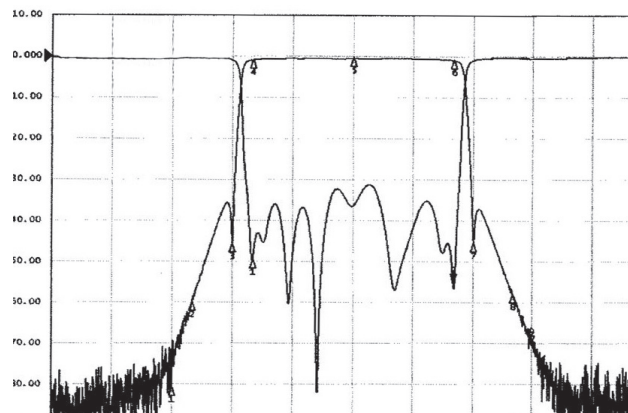
Other Specifications:

Passband:	3.7 - 4.2 GHz
Passband Loss:	0.5 dB Approx. @ center band 0.5 dB Approx. roll off @ band edges
Transmit Band Rejection:	> 70 dB Typ from 5.8-6.725 GHz
Flanges:	CPR229G (Input) CPR229F (Output)
Finish:	Gloss White Lacquer



Utilizing a durable and true one piece body/flange construction, the 13961W is shipped with hardware & gasketing and is ready to install between the feedhorn and the LNB/LNA.

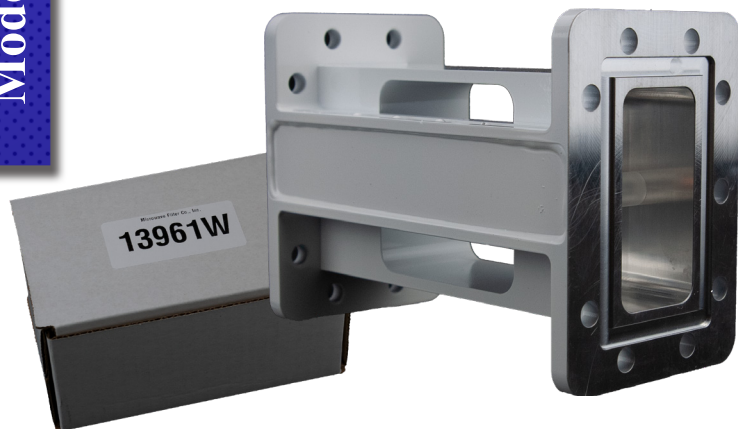
- (Standard Band) Passband Variations are typically available at no additional cost
- Typically in stock for same/next day shipping



S11 Log Mag 5.000dB/ Ref 0.000dB [F2]
S21 Log Mag 10.00dB/ Ref 0.000dB [F2]

Marker	
1	3.500000 GHz -80.580 dB
2	3.550000 GHz -59.765 dB
3	3.650000 GHz -45.593 dB
4	3.700000 GHz -0.7973 dB
5	3.950000 GHz -0.4502 dB
6	4.200000 GHz -0.8706 dB
7	4.250000 GHz -45.423 dB
8	4.350000 GHz -57.927 dB
9	4.400000 GHz -70.079 dB

**C-Band Interference Elimination Filter
Model 13961W**



ALL MFC PRODUCTS ARE MADE IN THE USA

VIKING
SATCOM

Sales@VikingSatcom.com - www.Vikingsatcom.com

T: 517.629.3000 • F: 517.629.2379 • 704 North Clark Street • Albion, MI