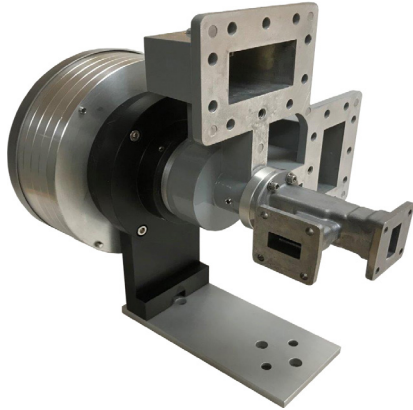


C/Ku Band, Offset, 4 Port Feeds - Non-Motorized



Your Trusted Source for Satellite Equipment



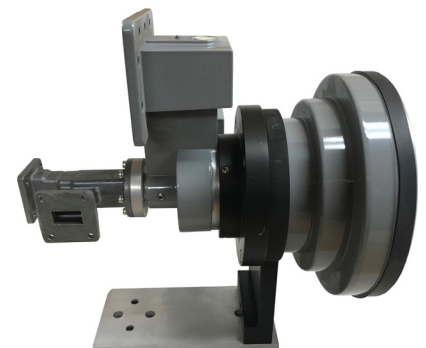
FEED-4CKU-EXT-OFF

- Receive Only 4 Port C/Ku band Offset Feed
- Simultaneous Reception of Dual C & Dual Ku-Band Polarities
- Extended C/Ku Band Model (FEED-4CKU-EXT-OFF)
- C-Band CP / Ku LP Model (FEED-4CCKU-OFF)
- 0.6 - 0.8 f/D Compatible

| SPECIFICATIONS | C Band | Ku Band |
|----------------------------------|----------------|------------------|
| Frequency: | | |
| FEED-4CKU-OFF | 3.7 – 4.2GHz | 10.70 – 12.75GHz |
| FEED-4CKU-EXT-OFF | 3.4 - 4.2 GHz | 10.70 – 12.75GHz |
| FEED-4CCKU-OFF | 3.7 - 4.2 GHz | 10.70 – 12.75GHz |
| VSWR (Typical) | | |
| FEED-4CKU-OFF | 1.5:1 | 1.6:1 |
| FEED-4CKU-EXT-OFF | 1.7:1 | 1.6:1 |
| FEED-4CCKU-OFF | 1.7:1 | 1.6:1 |
| Isolation (Linear / Circular) | 18 dB / 15 dB | 25 dB / - |
| Number of Ports | 2 | 2 |
| Type of Ports | WR229 | WR75 |
| Polarization: | | |
| FEED-4CKU-OFF, FEED-4CKU-EXT-OFF | Linear | Linear |
| FEED-4CCKU-OFF | Circular | Linear |
| Weight | 4.0 Lbs approx | |

FEATURES:

- Simultaneous Reception of Dual C & Dual Ku-Band Polarities
- For use with new antennas or upgrading existing antennas in the field
- Precision cast aluminum construction
- All Components Weather Resistant
- Stainless Steel Hardware
- Durable flake resistant coating
- Made in the USA



FEED-4CKU-OFF

FEED-4CKU-OFF_REV004

Specifications are subject to change without notice

sales@vikingsatcom.com • www.vikingsatcom.com

T: 517.629.3000 • F: 517.629.2379 • 704 North Clark Street • Albion, MI