

C/Ku Band Motorized, Offset, 4 Port Feeds



Your Trusted Source for Satellite Equipment



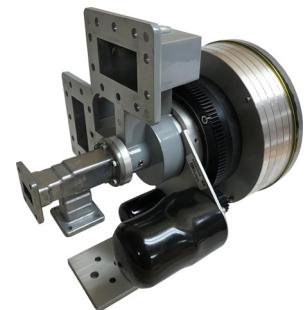
FEED-4CKU-MOTO-OFF

- **Motorized Receive Only 4 Port C/Ku band Offset Feed**
- **Simultaneous Reception of Dual C & Dual Ku-Band Polarities**
- **Extended C/Ku Band Model (FEED-4CKU-MOTO-EXT-OFF)**
- **C-Band CP / Ku LP Model (FEED-4CCKU-MOTO-OFF)**
- **0.6 - 0.8 f/D Compatible**

SPECIFICATIONS	C Band	Ku Band
Frequency:		
FEED-4CKU-MOTO-OFF	3.7 – 4.2GHz	10.70 – 12.75GHz
FEED-4CKU-MOTO-EXT-OFF	3.4 - 4.2 GHz	10.70 – 12.75GHz
FEED-4CCKU-MOTO-OFF	3.7 - 4.2 GHz	10.70 – 12.75GHz
VSWR (Typical)		
FEED-4CKU-MOTO-OFF	1.5:1	1.6:1
FEED-4CKU-MOTO-EXT-OFF	1.7:1	1.6:1
FEED-4CCKU-MOTO-OFF	1.7:1	1.6:1
Isolation (Linear / Circular)	18 dB / 15 dB	25 dB / -
Number of Ports	2	2
Type of Ports	WR229	WR75
Polarization:		
FEED-4CKU-MOTO-OFF, FEED-4CKU-MOTO-EXT-OFF, FEED-4CCKU-MOTO-OFF	Linear Circular	Linear Linear
Weight	7.5 Lbs approx	

FEATURES:

- Simultaneous Reception of Dual C & Dual Ku-Band Polarities
- Hi Torque 24VDC Motor / 5K 10 Turn Potentiometer
- For use with new antennas or upgrading existing antennas in the field
- Ideal for use with Research Concepts controllers
- Hard Coat Anodized Aluminum Gears for wear protection
- All Components Weather Resistant
- Stainless Steel Hardware
- Field Replaceable Components



FEED-4CKU-MOTO-EXT-OFF

FEED-4CKU-MOTO-OFF_REV002