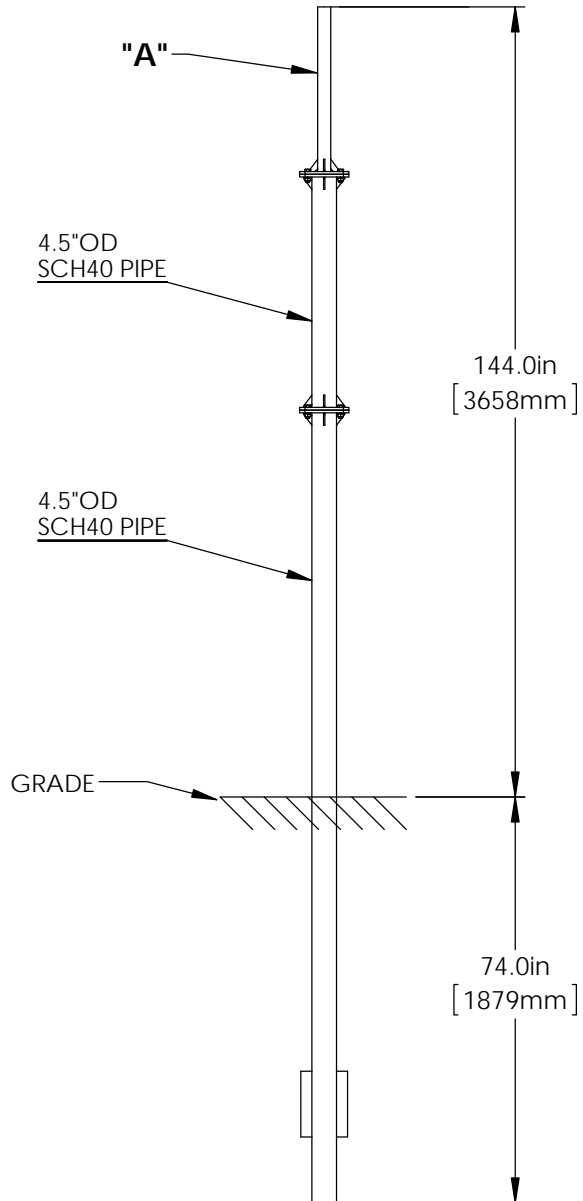
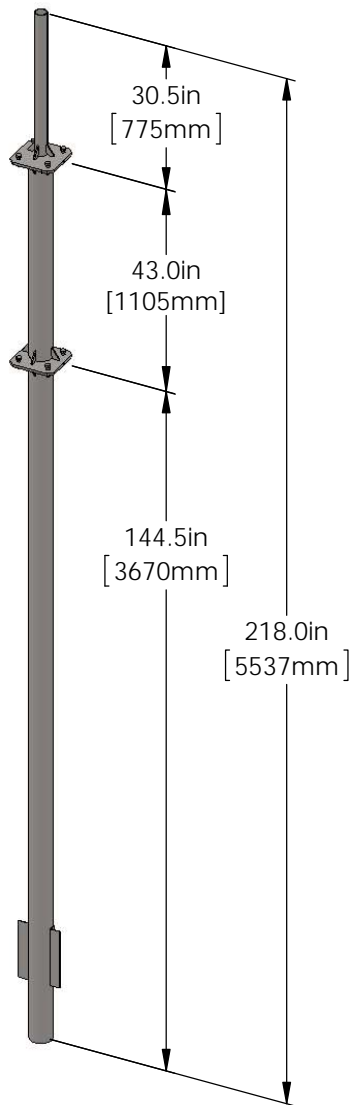


PART NO.	"A" MAST DIAMETER INCHES [mm]	WEIGHT LBS. [kg]
BIM12AG1.2-190-PE100L	1.9"OD [48.3mm]	204 lbs. [92.5kg]
BIM12AG1.2-237-PE100L	2.37"OD [60.3mm]	206 lbs. [93.4kg]
BIM12AG1.2-288-PE100L	2.88"OD [73.0mm]	212 lbs. [96.2kg]
BIM12AG1.2-300-PE100L	3"OD [76.2mm]	217 lbs. [98.4kg]



PROPRIETARY AND CONFIDENTIAL

THE INFORMATION CONTAINED IN THIS DRAWING IS THE SOLE PROPERTY OF BAIRD SUPPORTING SYSTEMS. ANY REPRODUCTION IN PART OR AS A WHOLE WITHOUT THE WRITTEN PERMISSION OF BAIRD SUPPORTING SYSTEMS IS PROHIBITED.



WWW.BAIRDMOUNTS.COM

UNLESS OTHERWISE SPECIFIED:

DIMENSIONS ARE IN INCHES
TOLERANCES:
FRACTIONAL ±
ANGULAR: MACH ± BEND ±
TWO PLACE DECIMAL ±
THREE PLACE DECIMAL ±

DO NOT SCALE DRAWING

BAIRD MOUNTING SYSTEMS

WATERLOO, IA 50703
PHONE: 319-233-3561
SALES@BAIRDMOUNTS.COM

TITLE:

INGROUND POLE-12' ABOVE GRADE FOR
1.2M OR SMALLER ANTENNAS (100 MPH)

DRAWN BY
JK

MATERIAL
STEEL

DWG. PURPOSE
CUSTOMER

DATE
08/14/13

FINISH
HDG

SHEET
1OF1

SCALE
1:35

PART. NO.

SEE TABLE

DWG. NO.

BIM12AG1.2-(000)PE100L