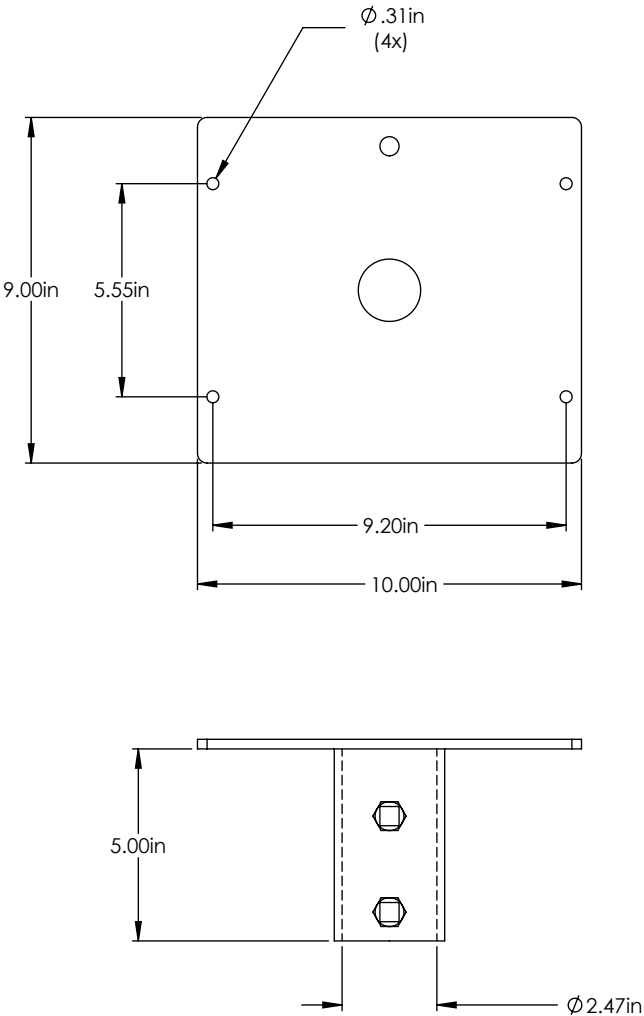
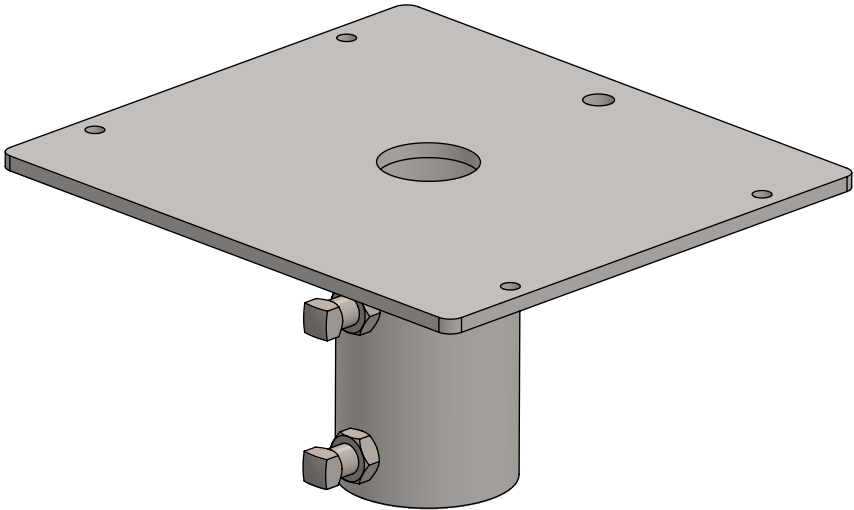


PART NO.	DESCRIPTION	WEIGHT (LBS.)
MA-237-SLHPFW	2.37OD TO STARLINK HP FLAT WEDGE ADAPTER	9



PROPRIETARY AND CONFIDENTIAL
THE INFORMATION CONTAINED IN THIS DRAWING IS THE SOLE PROPERTY OF BAIRD SUPPORTING SYSTEMS. ANY REPRODUCTION IN PART OR AS A WHOLE WITHOUT THE WRITTEN PERMISSION OF BAIRD SUPPORTING SYSTEMS IS PROHIBITED.



UNLESS OTHERWISE SPECIFIED:
DIMENSIONS ARE IN INCHES
TOLERANCES:
FRACTIONAL ±
ANGULAR: MACH ± BEND ±
TWO PLACE DECIMAL ±
THREE PLACE DECIMAL ±

DO NOT SCALE DRAWING

Distributed By: Viking Satcom

Albion, MI 49224
PHONE: 517-629-3000
SALES@VIKINGSATCOM.COM

DESCRIPTION:
MAST ADAPTER 2.37"OD MAST TO STARLINK
HIGH PERFORMANCE FLAT WEDGE

DRAWN BY JK	DATE 07/13/23
MATERIAL STEEL	FINISH HDG
DWG. PURPOSE CUSTOMER	SHEET 1 OF 1
PART. NO. MA-237-SLHPFW	SCALE -
DWG. NO. MA-237-SLHPFW	