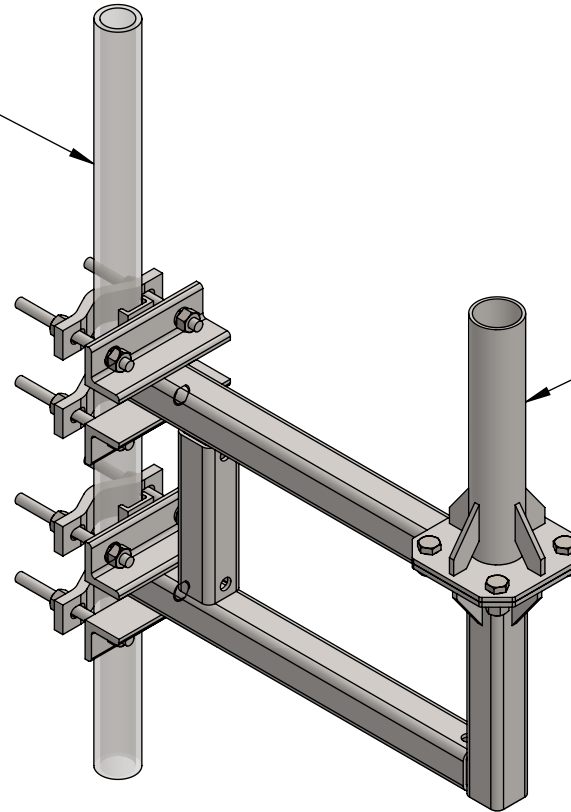


PART NO.	MAST DIAMETER	WEIGHT
TM12P6S-190X1	1.90"OD	52 lbs.
TM12P6S-200X1	2.00"OD	52 lbs.
TM12P6S-237X1	2.37"OD	53 lbs.
TM12P6S-288X1	2.88"OD	55 lbs.

EXISTING 1.90"OD TO 3.50"OD
TOWER LEG/VERTICAL POST



MAST DIAMETER (see chart)

PROPRIETARY AND CONFIDENTIAL

THE INFORMATION CONTAINED IN THIS DRAWING IS THE SOLE PROPERTY OF BAIRD SUPPORTING SYSTEMS. ANY REPRODUCTION IN PART OR AS A WHOLE WITHOUT THE WRITTEN PERMISSION OF BAIRD SUPPORTING SYSTEMS IS PROHIBITED.



UNLESS OTHERWISE SPECIFIED:

DIMENSIONS ARE IN INCHES
TOLERANCES:
FRACTIONAL \pm
ANGULAR: MACH \pm BEND \pm
TWO PLACE DECIMAL \pm
THREE PLACE DECIMAL \pm

DO NOT SCALE DRAWING

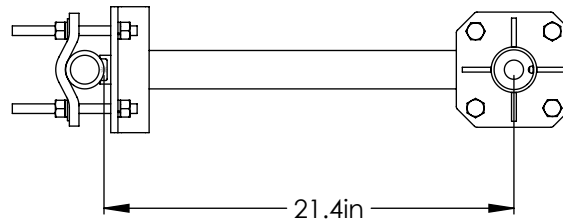
Distributed By: Viking Satcom

Albion, MI 49224
PHONE: 517-629-3000
SALES@VIKINGSATCOM.COM

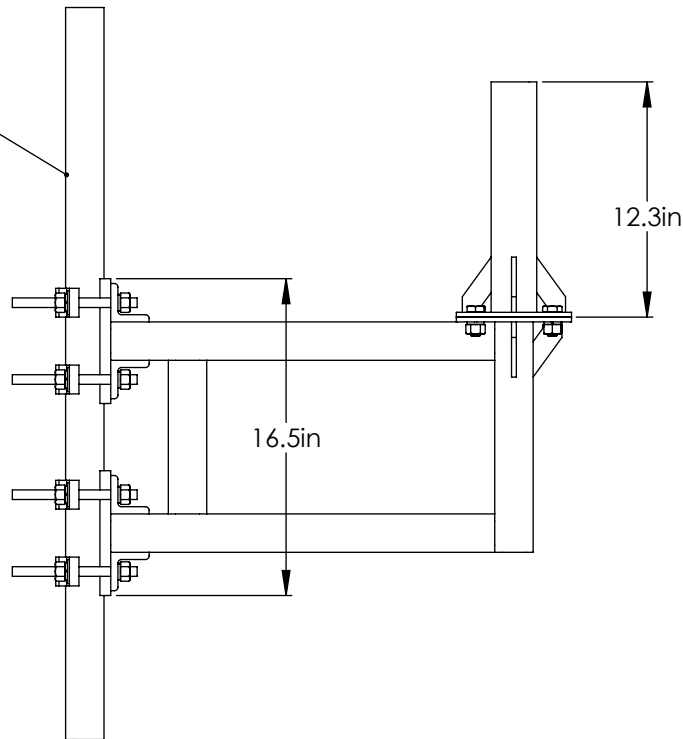
TITLE:

TOWER MOUNT FOR 1.2M ANTENNA- TOWER
LEG 1.90"OD TO 3.5"OD

DRAWN BY JK	DATE 11/23/16
MATERIAL STEEL	FINISH HDG
DWG. PURPOSE CUSTOMER	SHEET 1 OF 2
PART. NO. SEE CHART	SCALE -
DWG. NO. TM12P6S-(000)X1	



EXISTING TOWER LEG/VERTICAL PIPE
1.90"OD TO 3.50"OD



PROPRIETARY AND CONFIDENTIAL

THE INFORMATION CONTAINED IN THIS DRAWING IS THE SOLE PROPERTY OF BAIRD SUPPORTING SYSTEMS. ANY REPRODUCTION IN PART OR AS A WHOLE WITHOUT THE WRITTEN PERMISSION OF BAIRD SUPPORTING SYSTEMS IS PROHIBITED.



UNLESS OTHERWISE SPECIFIED:

DIMENSIONS ARE IN INCHES
TOLERANCES:
FRACTIONAL \pm
ANGULAR: MACH \pm BEND \pm
TWO PLACE DECIMAL \pm
THREE PLACE DECIMAL \pm

DO NOT SCALE DRAWING

Distributed By: Viking Satcom

Albion, MI 49224
PHONE: 517-629-3000
SALES@VIKINGSATCOM.COM

TITLE:

TOWER MOUNT FOR 1.2M ANTENNA- TOWER
LEG 1.90"OD TO 3.50"OD

DRAWN BY JK	DATE 11/23/16
MATERIAL STEEL	FINISH HDG
DWG. PURPOSE CUSTOMER	SHEET 2 OF 2
	SCALE -
PART. NO. SEE CHART	
DWG. NO. TM12P6L-(000)X1	