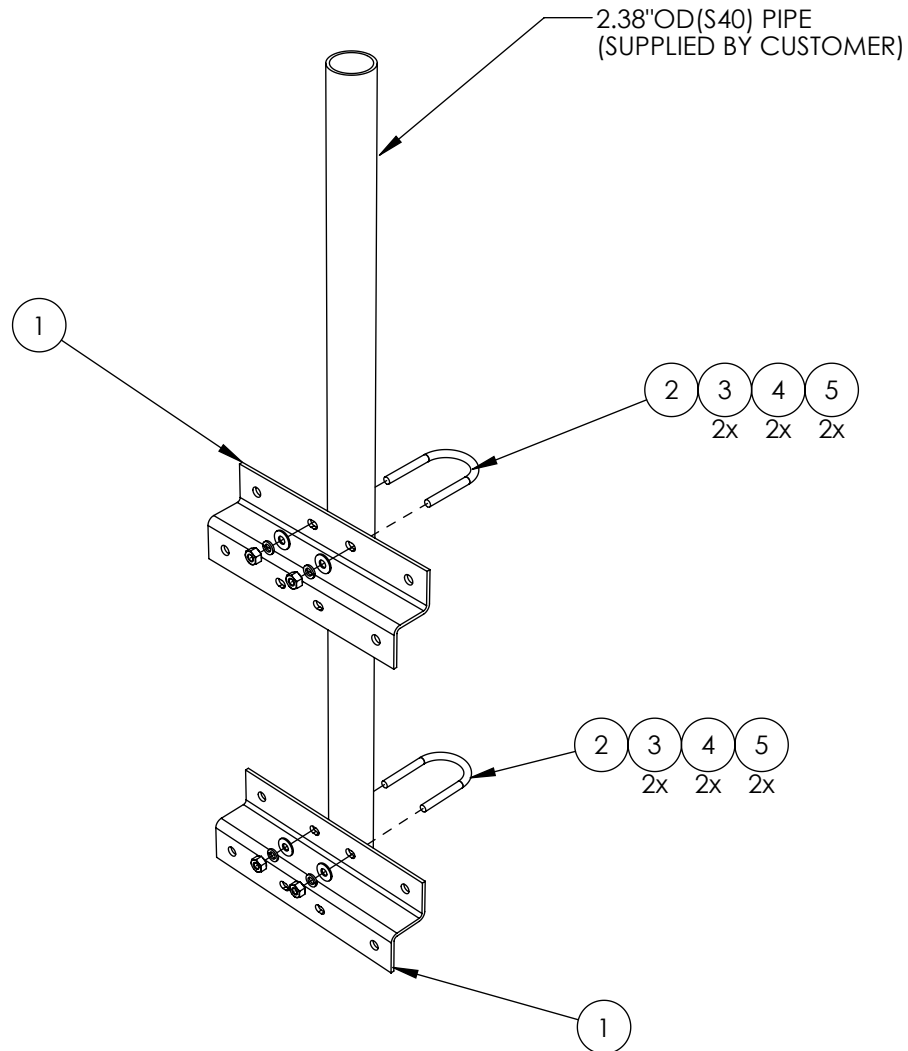


SYM	PART NO.	DESCRIPTION	QTY.
1	AB5940HD	AWM MOUNTING ANGLE FORMED 16", HDG	2
2	HUB-50X250X450HDG	1/2" DIA.x2.5"Wx4.5"D UBOLT, HDG	2
3	H2-0500HN2HHDG	1/2" NUT 2H, HDG	4
4	H4-0500LWHDG	1/2" SPLITLOCKWASHER, HDG	4
5	H3-0500FWHDG	1/2" FLATWASHER, HDG	4



**PROPRIETARY AND CONFIDENTIAL**

THE INFORMATION CONTAINED IN THIS DRAWING IS THE SOLE PROPERTY OF BAIRD SUPPORTING SYSTEMS. ANY REPRODUCTION IN PART OR AS A WHOLE WITHOUT THE WRITTEN PERMISSION OF BAIRD SUPPORTING SYSTEMS IS PROHIBITED.



UNLESS OTHERWISE SPECIFIED:

DIMENSIONS ARE IN INCHES  
TOLERANCES:  
FRACTIONAL ±  
ANGULAR: MACH ± BEND ±  
TWO PLACE DECIMAL ±  
THREE PLACE DECIMAL ±

DO NOT SCALE DRAWING

**Distributed By: Viking Satcom**

Albion, MI 49224  
PHONE: 517-629-3000  
SALES@VIKINGSATCOM.COM

TITLE:  
AWM-3OS16-238 INST

DRAWN BY  
JK

MATERIAL  
STEEL

DWG. PURPOSE  
INST

PART. NO.  
-

DWG. NO.  
AWM-3OS16-238 INST R1

DATE  
10/24/16

FINISH  
HDG

SHEET  
1 OF 1

SCALE  
-