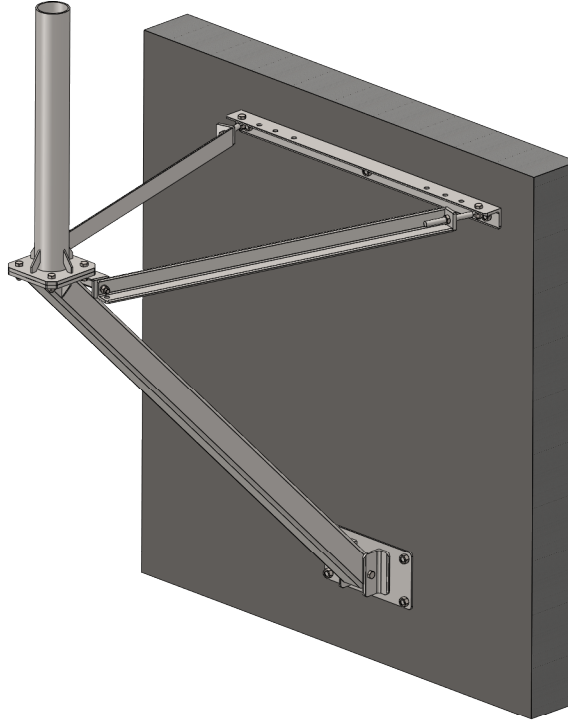


WL2-60-(000)X (0)



| SYM | PART# | DESCRIPTION | QTY. |
|-----|-------------------|---|------|
| 1 | AB1415HD | SUPPORT ARM ASS'Y (4"SQ x 84" LONG), HDG | 1 |
| 2 | AB1246HD | LOWER BASE ASS'Y, HDG | 1 |
| 3 | AB1417HD | RH/LH ARM ASS'Y (52.5"LONG), HDG | 2 |
| 4 | AB1418HD | UPPER MOUNTING ANGLE (48" LONG), HDG | 1 |
| 5 | B5332(.25).81PWHD | PLATE WASHER .25"x4.5"SQ w/.81" HOLE, HDG | 3 |
| 6 | AB1171HD | LOWER BACK PLATE 8"x16", HDG | 1 |
| 7 | AS REQ'D | MAST ASS'Y(DIAMETER & HEIGHT), HDG | 1 |
| 8 | B1450-16 | 3/4"x 16" THREADED ROD , Z/P | 7 |
| 9 | #B-.75X8 | 3/4" x 8" SPADE BOLT, Z/P | 2 |
| 10 | H2-0750JN | 3/4" JAM NUT, Z/P | 4 |
| 11 | H2-0750HN | 3/4" NUT, Z/P | 32 |
| 12 | H3-0750FW | 3/4" FLATWASHER, Z/P | 7 |
| 13 | H1-0625-550 | 5/8"x5-1/2" BOLT GR.5, Z/P | 1 |
| 14 | H1-0625-200GR8 | 5/8"x2" BOLT GR.8 , Z/P | 2 |
| 15 | H1-0625-150 | 5/8"x1-1/2" BOLT GR.5 , Z/P | 2 |
| 16 | H2-0625HN | 5/8" NUT, Z/P | 5 |
| 17 | H4-0625LW | 5/8" LOCKWASHER, Z/P | 5 |
| 18 | H1-0750-200 | 3/4" x 2" BOLT GR.5, Z/P | 4 |
| 19 | H4-0750LW | 3/4" LOCKWASHER, Z/P | 4 |

PROPRIETARY AND CONFIDENTIAL

THE INFORMATION CONTAINED IN THIS DRAWING IS THE SOLE PROPERTY OF BAIRD SUPPORTING SYSTEMS. ANY REPRODUCTION IN PART OR AS A WHOLE WITHOUT THE WRITTEN PERMISSION OF BAIRD SUPPORTING SYSTEMS IS PROHIBITED.



UNLESS OTHERWISE SPECIFIED:

DIMENSIONS ARE IN INCHES
TOLERANCES:
FRACTIONAL ±
ANGULAR: MACH ± BEND ±
TWO PLACE DECIMAL ±
THREE PLACE DECIMAL ±

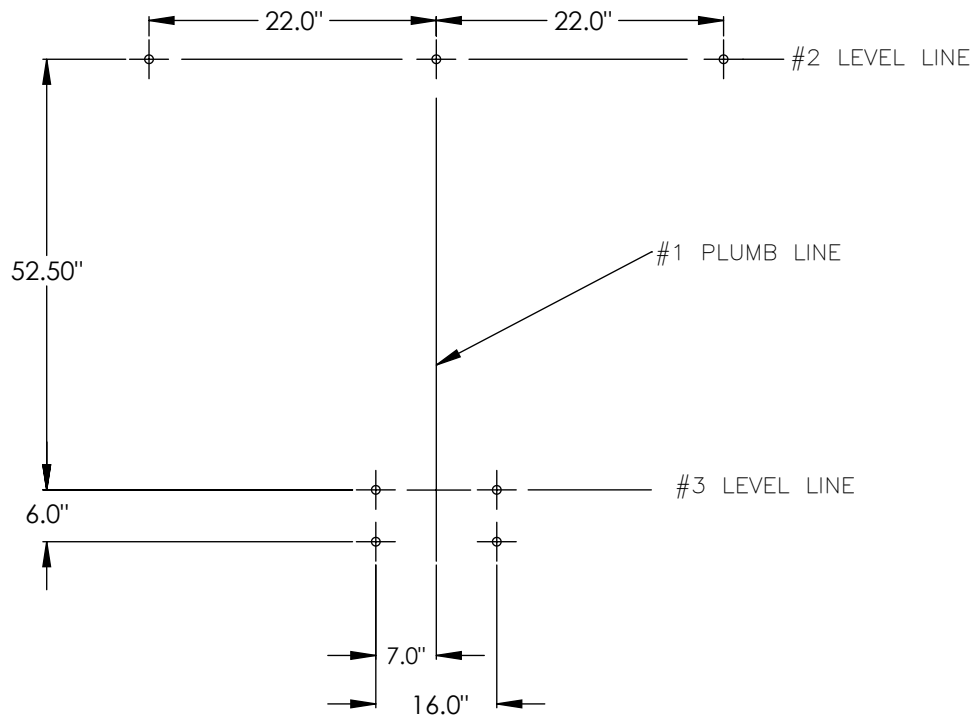
DO NOT SCALE DRAWING

Distributed By: Viking Satcom

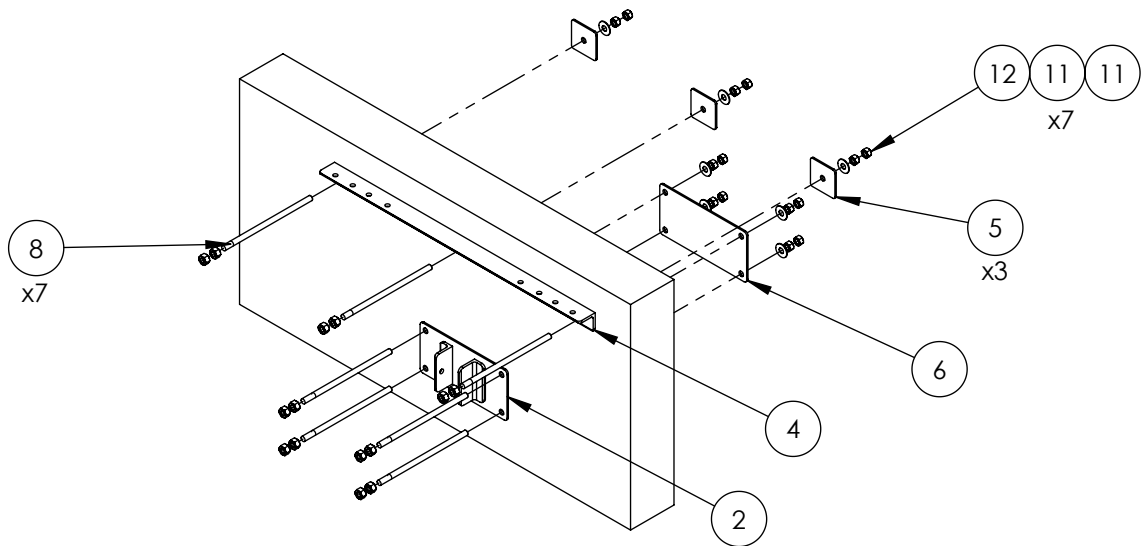
Albion, MI 49224
PHONE: 517-629-3000
SALES@VIKINGSATCOM.COM

TITLE:
WL2-60 WALL MOUNT

| | |
|---|------------------|
| DRAWN BY JK | DATE 12/11/14 |
| MATERIAL STEEL | FINISH HDG |
| DWG. PURPOSE INST | SHEET 1 OF 3 |
| PART. NO. WL2-60-(000)X(0) | SCALE - |
| DWG. NO. WL2-60-(000)X(0) INSTRUCTIONS | |



LAYOUT THE MOUNTING HOLE PATTERN AS SHOWN ABOVE. HOLES SIZED FOR 3/4" DIAMETER HARDWARE.



ATTACH THE UPPER WALL ANGLE AND THE LOWER BASE ASSY TO THE WALL(SEE DIAGRAM ABOVE)

PROPRIETARY AND CONFIDENTIAL

THE INFORMATION CONTAINED IN THIS DRAWING IS THE SOLE PROPERTY OF BAIRD SUPPORTING SYSTEMS. ANY REPRODUCTION IN PART OR AS A WHOLE WITHOUT THE WRITTEN PERMISSION OF BAIRD SUPPORTING SYSTEMS IS PROHIBITED.



UNLESS OTHERWISE SPECIFIED:

DIMENSIONS ARE IN INCHES
TOLERANCES:
FRACTIONAL ±
ANGULAR: MACH ± BEND ±
TWO PLACE DECIMAL ±
THREE PLACE DECIMAL ±

DO NOT SCALE DRAWING

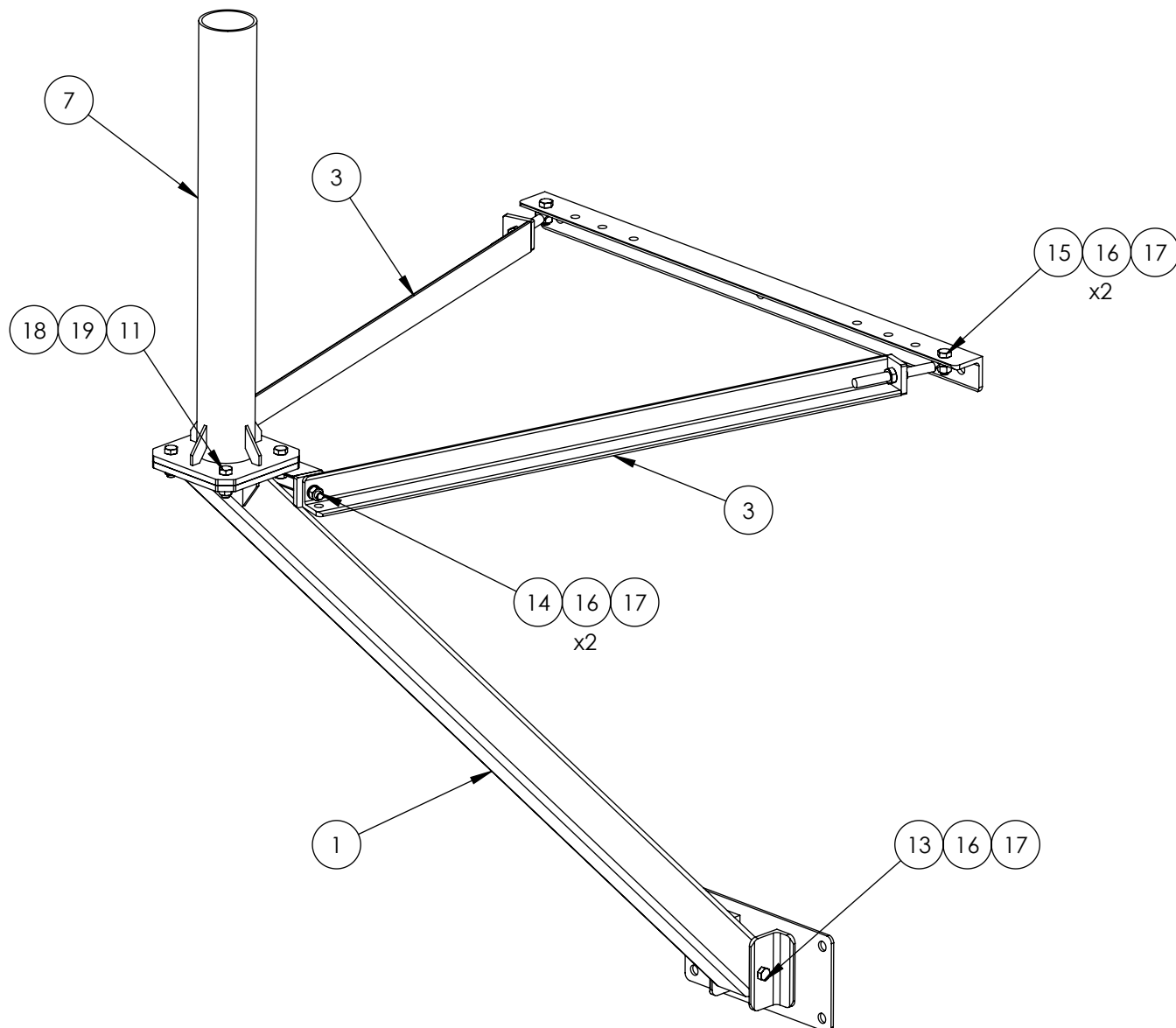
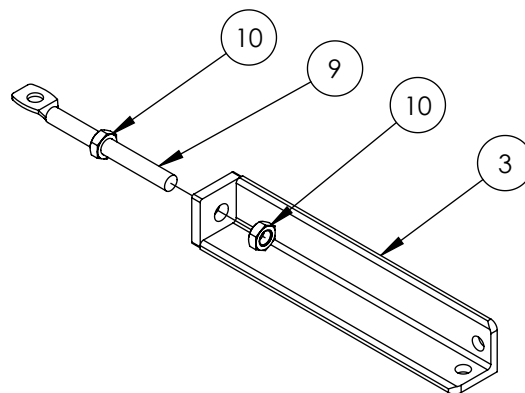
Distributed By: Viking Satcom

Albion, MI 49224
PHONE: 517-629-3000
SALES@VIKINGSATCOM.COM

TITLE:
WL2-60 WALL MOUNT

| | |
|---|------------------|
| DRAWN BY JK | DATE 12/11/14 |
| MATERIAL STEEL | FINISH HDG |
| DWG. PURPOSE INST | SHEET 2OF3 |
| PART. NO. WL2-60-(000)X(0) | SCALE - |
| DWG. NO. WL2-60-(000)X(0) INSTRUCTIONS | |

ATTACH A 3/4"x8" SPADE BOLT(#10) TO EACH OF THE ARM ANGLES (#3) USING TWO 3/4" JAM NUTS(#10)



PROPRIETARY AND CONFIDENTIAL

THE INFORMATION CONTAINED IN THIS DRAWING IS THE SOLE PROPERTY OF BAIRD SUPPORTING SYSTEMS. ANY REPRODUCTION IN PART OR AS A WHOLE WITHOUT THE WRITTEN PERMISSION OF BAIRD SUPPORTING SYSTEMS IS PROHIBITED.



UNLESS OTHERWISE SPECIFIED:

DIMENSIONS ARE IN INCHES
TOLERANCES:
FRACTIONAL ±
ANGULAR: MACH ± BEND ±
TWO PLACE DECIMAL ±
THREE PLACE DECIMAL ±

DO NOT SCALE DRAWING

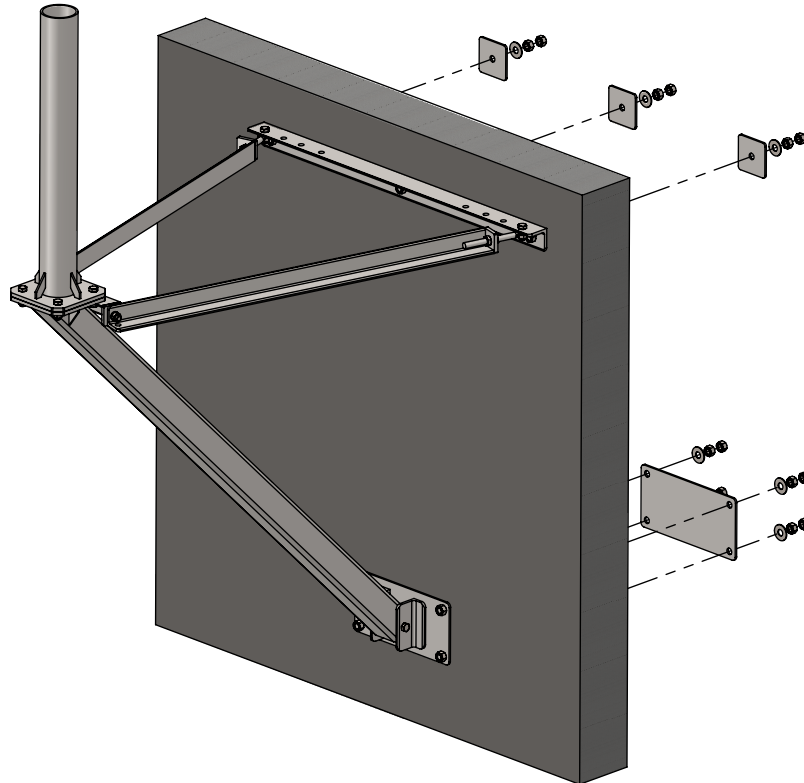
Distributed By: Viking Satcom

Albion, MI 49224
PHONE: 517-629-3000
SALES@VIKINGSATCOM.COM

TITLE:
WL2-60 WALL MOUNT

| | |
|---|------------------|
| DRAWN BY JK | DATE 12/11/14 |
| MATERIAL STEEL | FINISH HDG |
| DWG. PURPOSE INST | SHEET 3OF3 |
| PART. NO. WL2-60-(000)X(0) | SCALE - |
| DWG. NO. WL2-60-(000)X(0) INSTRUCTIONS | |

| PART NO. | MAST DIAMETER | WEIGHT |
|--------------|---------------|----------|
| WL2-60-288X3 | 2.88"OD | 270 lbs. |
| WL2-60-400X3 | 4.00"OD | 280 lbs. |
| WL2-60-450X3 | 4.50"OD | 285 lbs. |
| WL2-60-556X3 | 5.56"OD | 297 lbs. |
| WL2-60-662X3 | 6.62"OD | 310 lbs. |



PROPRIETARY AND CONFIDENTIAL

THE INFORMATION CONTAINED IN THIS DRAWING IS THE SOLE PROPERTY OF BAIRD SUPPORTING SYSTEMS. ANY REPRODUCTION IN PART OR AS A WHOLE WITHOUT THE WRITTEN PERMISSION OF BAIRD SUPPORTING SYSTEMS IS PROHIBITED.



UNLESS OTHERWISE SPECIFIED:

DIMENSIONS ARE IN INCHES
TOLERANCES:
FRACTIONAL \pm
ANGULAR: MACH \pm BEND \pm
TWO PLACE DECIMAL \pm
THREE PLACE DECIMAL \pm

DO NOT SCALE DRAWING

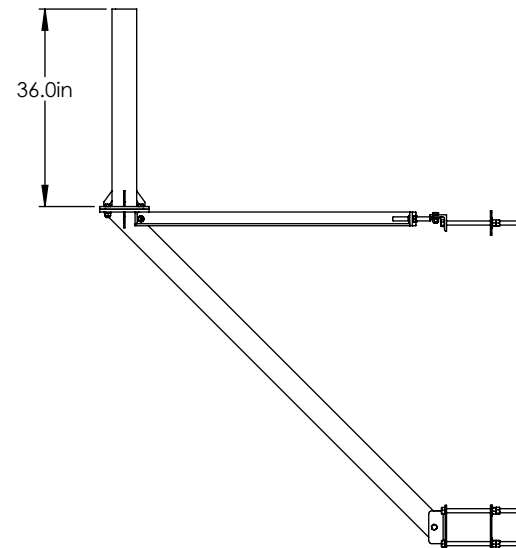
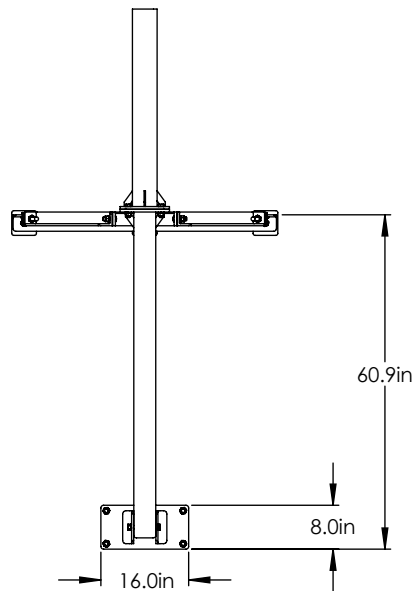
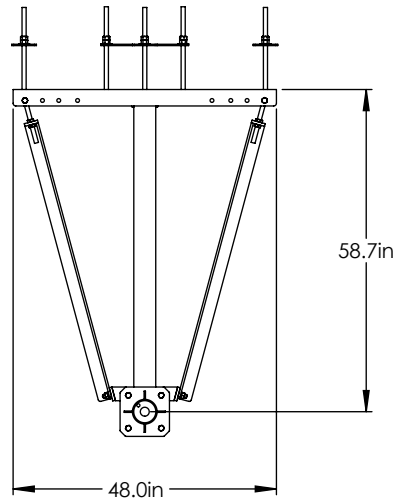
Distributed By: Viking Satcom

Albion, MI 49224
PHONE: 517-629-3000
SALES@VIKINGSATCOM.COM

TITLE:

WL2-60 WALL MOUNT WITH 3' MAST

| | |
|----------------------------|------------------|
| DRAWN BY JK | DATE 10/23/13 |
| MATERIAL STEEL | FINISH HDG |
| DWG. PURPOSE CUSTOMER | SHEET 1OF2 |
| PART. NO. SEE TABLE | SCALE - |
| DWG. NO. WL2-60-(000)X3 | |



PROPRIETARY AND CONFIDENTIAL

THE INFORMATION CONTAINED IN THIS DRAWING IS THE SOLE PROPERTY OF BAIRD SUPPORTING SYSTEMS. ANY REPRODUCTION IN PART OR AS A WHOLE WITHOUT THE WRITTEN PERMISSION OF BAIRD SUPPORTING SYSTEMS IS PROHIBITED.



UNLESS OTHERWISE SPECIFIED:

DIMENSIONS ARE IN INCHES
TOLERANCES:
FRACTIONAL \pm
ANGULAR: MACH \pm BEND \pm
TWO PLACE DECIMAL \pm
THREE PLACE DECIMAL \pm

DO NOT SCALE DRAWING

Distributed By: Viking Satcom

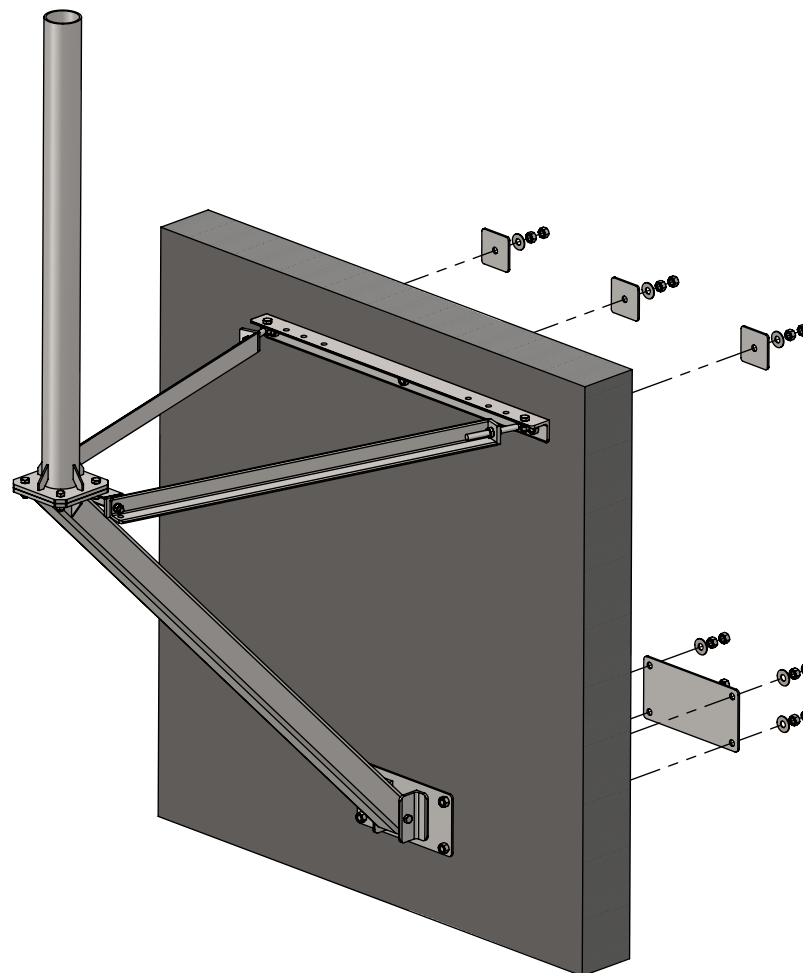
Albion, MI 49224
PHONE: 517-629-3000
SALES@VIKINGSATCOM.COM

TITLE:

WL2-60 WALL MOUNT WITH 3' MAST

| | | |
|--------------------------------|------------------|---------------|
| DRAWN BY JK | DATE 10/23/13 | |
| MATERIAL STEEL | FINISH HDG | |
| DWG. PURPOSE CUSTOMER | SHEET 2OF2 | SCALE 1:35 |
| PART. NO. SEE TABLE-SHEET 1 | | |
| DWG. NO. WL2-60-(000)X3 | | |

| PART NO. | MAST DIAMETER | WEIGHT |
|--------------|---------------|----------|
| WL2-60-288X5 | 2.88"OD | 282 lbs. |
| WL2-60-450X5 | 4.50"OD | 308 lbs. |



PROPRIETARY AND CONFIDENTIAL
THE INFORMATION CONTAINED IN THIS DRAWING IS THE SOLE PROPERTY OF BAIRD SUPPORTING SYSTEMS. ANY REPRODUCTION IN PART OR AS A WHOLE WITHOUT THE WRITTEN PERMISSION OF BAIRD SUPPORTING SYSTEMS IS PROHIBITED.



UNLESS OTHERWISE SPECIFIED:
DIMENSIONS ARE IN INCHES
TOLERANCES:
FRACTIONAL \pm
ANGULAR: MACH \pm BEND \pm
TWO PLACE DECIMAL \pm
THREE PLACE DECIMAL \pm

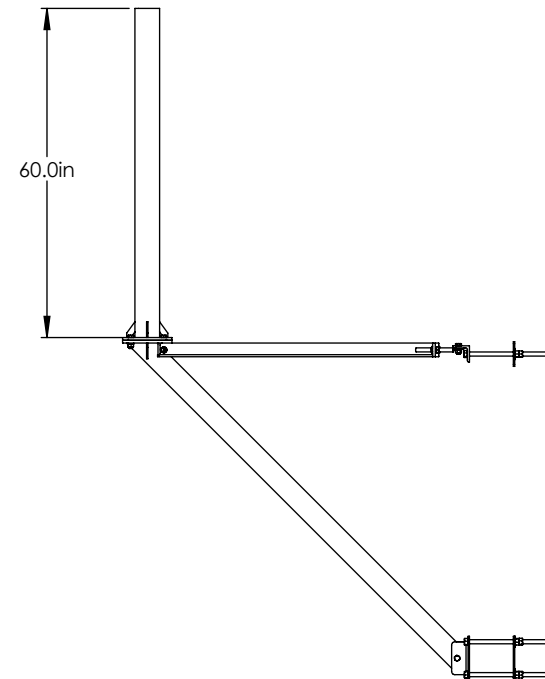
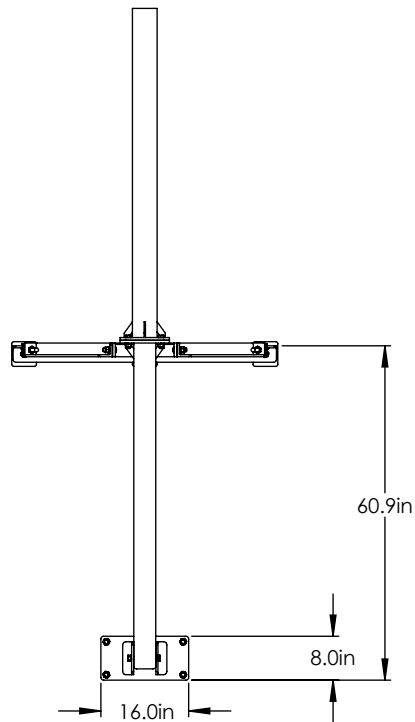
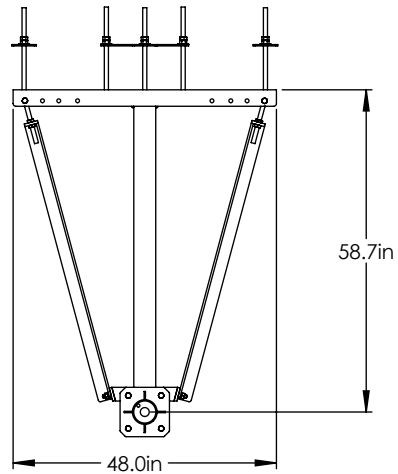
DO NOT SCALE DRAWING

Distributed By: Viking Satcom

Albion, MI 49224
PHONE: 517-629-3000
SALES@VIKINGSATCOM.COM

TITLE:
WL2-60 WALL MOUNT WITH 5' MAST

| | |
|----------------------------|------------------|
| DRAWN BY JK | DATE 10/23/13 |
| MATERIAL STEEL | FINISH HDG |
| DWG. PURPOSE CUSTOMER | SHEET 1 OF 2 |
| SCALE - | |
| PART. NO. SEE TABLE | |
| DWG. NO. WL2-60-(000)X5 | |



PROPRIETARY AND CONFIDENTIAL
THE INFORMATION CONTAINED IN THIS DRAWING IS THE SOLE PROPERTY OF BAIRD SUPPORTING SYSTEMS. ANY REPRODUCTION IN PART OR AS A WHOLE WITHOUT THE WRITTEN PERMISSION OF BAIRD SUPPORTING SYSTEMS IS PROHIBITED.



UNLESS OTHERWISE SPECIFIED:
DIMENSIONS ARE IN INCHES
TOLERANCES:
FRACTIONAL \pm
ANGULAR: MACH \pm BEND \pm
TWO PLACE DECIMAL \pm
THREE PLACE DECIMAL \pm

DO NOT SCALE DRAWING

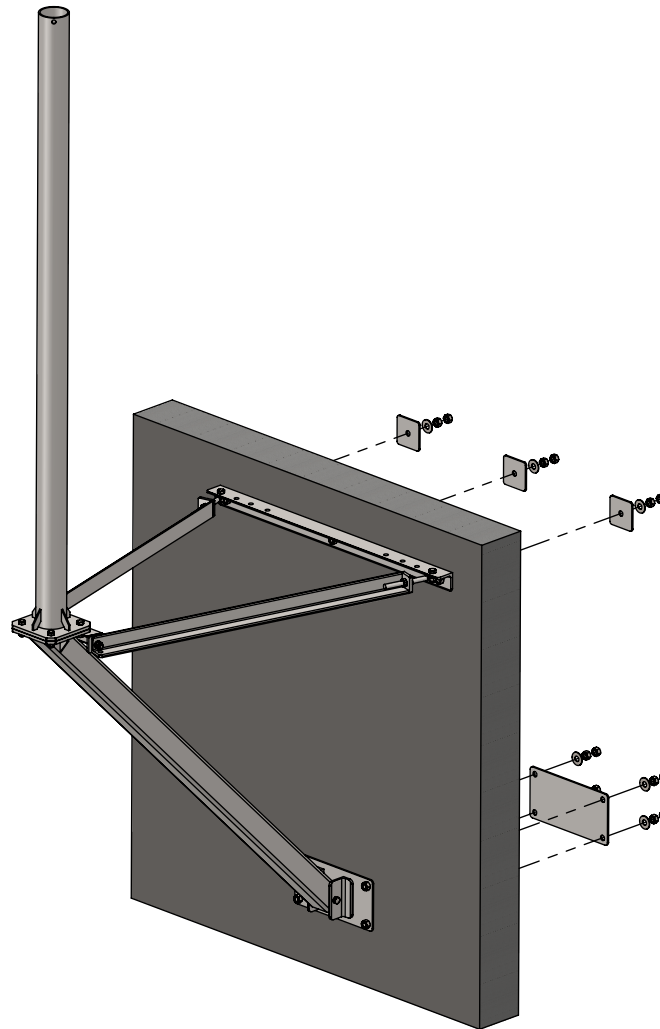
Distributed By: Viking Satcom

Albion, MI 49224
PHONE: 517-629-3000
SALES@VIKINGSATCOM.COM

TITLE:
WL2-60 WALL MOUNT WITH 5' MAST

| | | |
|--------------------------------|------------------|---------------|
| DRAWN BY JK | DATE 10/23/13 | |
| MATERIAL STEEL | FINISH HDG | |
| DWG. PURPOSE CUSTOMER | SHEET 2OF2 | SCALE 1:35 |
| PART. NO. SEE TABLE-SHEET 1 | | |
| DWG. NO. WL2-60-(000)X5 | | |

| PART NO. | MAST DIAMETER | WEIGHT |
|--------------|---------------|----------|
| WL2-60-288X8 | 2.88"OD | 300 lbs. |
| WL2-60-450X8 | 4.50"OD | 341 lbs. |



PROPRIETARY AND CONFIDENTIAL
THE INFORMATION CONTAINED IN THIS DRAWING IS THE SOLE PROPERTY OF BAIRD SUPPORTING SYSTEMS. ANY REPRODUCTION IN PART OR AS A WHOLE WITHOUT THE WRITTEN PERMISSION OF BAIRD SUPPORTING SYSTEMS IS PROHIBITED.



UNLESS OTHERWISE SPECIFIED:
DIMENSIONS ARE IN INCHES
TOLERANCES:
FRACTIONAL \pm
ANGULAR: MACH \pm BEND \pm
TWO PLACE DECIMAL \pm
THREE PLACE DECIMAL \pm

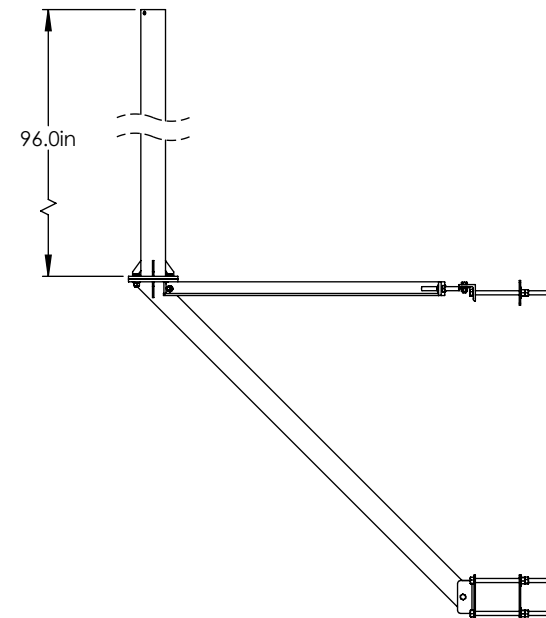
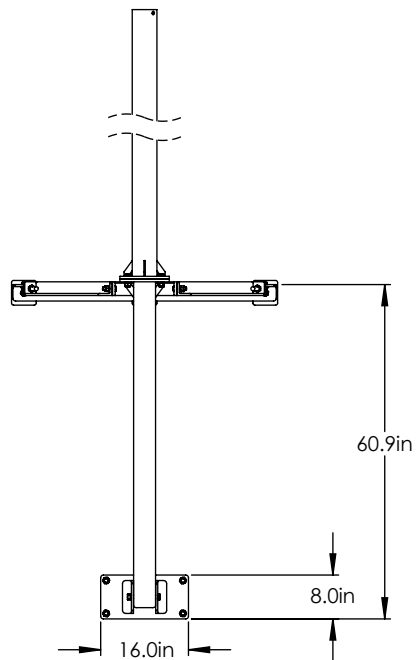
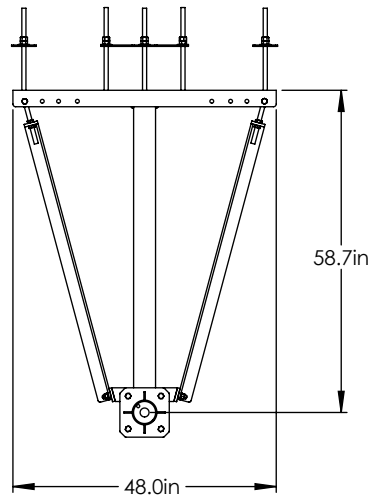
DO NOT SCALE DRAWING

Distributed By: Viking Satcom

Albion, MI 49224
PHONE: 517-629-3000
SALES@VIKINGSATCOM.COM

TITLE:
WL2-60 WALL MOUNT WITH 8' MAST

| | |
|----------------------------|------------------|
| DRAWN BY JK | DATE 10/23/13 |
| MATERIAL STEEL | FINISH HDG |
| DWG. PURPOSE CUSTOMER | SHEET 1 OF 2 |
| SCALE - | |
| PART. NO. SEE TABLE | |
| DWG. NO. WL2-60-(000)X8 | |



PROPRIETARY AND CONFIDENTIAL
THE INFORMATION CONTAINED IN THIS DRAWING IS THE SOLE PROPERTY OF BAIRD SUPPORTING SYSTEMS. ANY REPRODUCTION IN PART OR AS A WHOLE WITHOUT THE WRITTEN PERMISSION OF BAIRD SUPPORTING SYSTEMS IS PROHIBITED.



UNLESS OTHERWISE SPECIFIED:
DIMENSIONS ARE IN INCHES
TOLERANCES:
FRACTIONAL \pm
ANGULAR: MACH \pm BEND \pm
TWO PLACE DECIMAL \pm
THREE PLACE DECIMAL \pm

DO NOT SCALE DRAWING

Distributed By: Viking Satcom

Albion, MI 49224
PHONE: 517-629-3000
SALES@VIKINGSATCOM.COM

TITLE:
WL2-60 WALL MOUNT WITH 8' MAST

| | |
|--------------------------------|------------------|
| DRAWN BY JK | DATE 10/23/13 |
| MATERIAL STEEL | FINISH HDG |
| DWG. PURPOSE CUSTOMER | SHEET 2OF2 |
| | SCALE - |
| PART. NO. SEE TABLE-SHEET 1 | |
| DWG. NO. WL2-60-(000)X8 | |