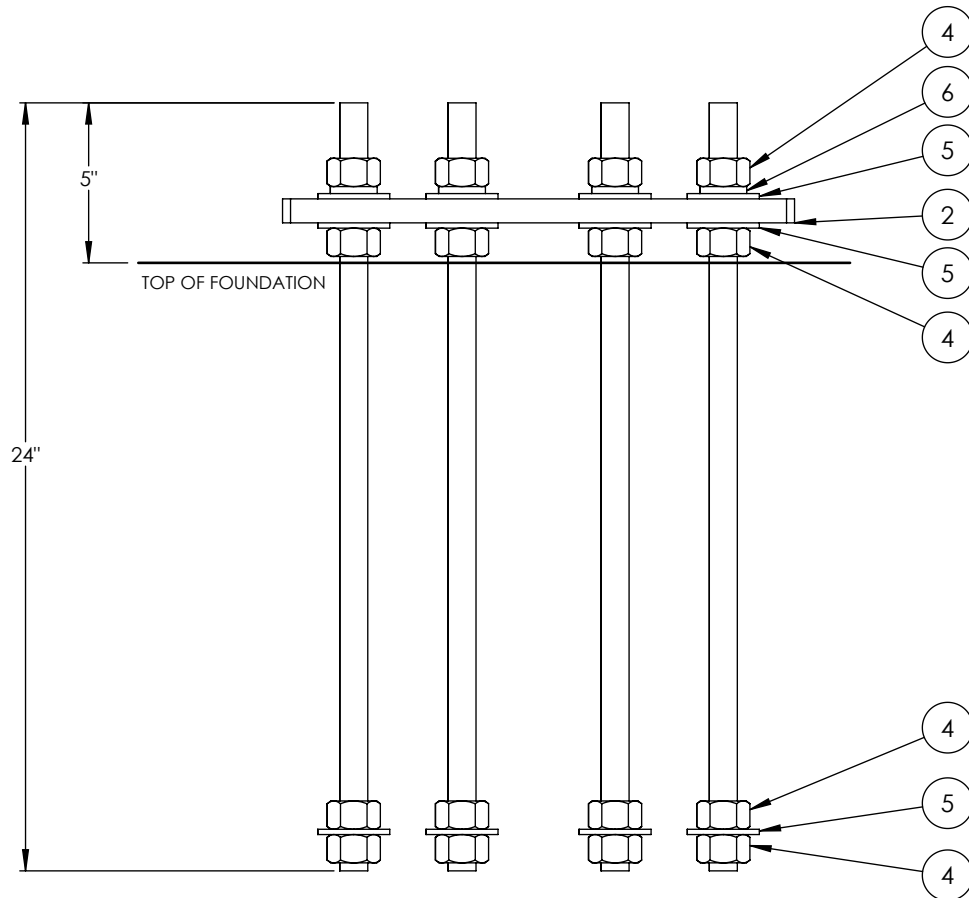


PK(000)HX6BC125C1

ITEM NO.	PART NUMBER	DESCRIPTION	QTY.
1	AS REQ'D	X.XX" ODx 6' PEDESTAL, HDG	1
2	B5547(8X.87D-125BC)WT	WOOD TEMPLATE 16x16	1
3	B1674-24(449HDG)	7/8"-9 x 24" THREADED ROD A449, HDG	8
4	H2-0875HN2HHDG	7/8"-9 HEX NUT GR.2H, HDG	32
5	H3-0875FWHDG	7/8" USS FLATWASHER, HDG	24
6	H4-0875LWHDG	7/8" SPLIT LOCKWASHER, HDG	8



On one end of each rod attach a flatwasher sandwiched between two hex nuts. Attach the the other end of the rod to the wood template as shown in the diagram . The wood template will help the keep the rods aligned. When pouring the concrete keep the top 5" of thread clean.

PROPRIETARY AND CONFIDENTIAL

THE INFORMATION CONTAINED IN THIS DRAWING IS THE SOLE PROPERTY OF BAIRD SUPPORTING SYSTEMS. ANY REPRODUCTION IN PART OR AS A WHOLE WITHOUT THE WRITTEN PERMISSION OF BAIRD SUPPORTING SYSTEMS IS PROHIBITED.



UNLESS OTHERWISE SPECIFIED:

DIMENSIONS ARE IN INCHES
TOLERANCES:
FRACTIONAL ±
ANGULAR: MACH ± BEND ±
TWO PLACE DECIMAL ±
THREE PLACE DECIMAL ±

DO NOT SCALE DRAWING

Distributed By: Viking Satcom

Albion, MI 49224
PHONE: 517-629-3000
SALES@VIKINGSATCOM.COM

TITLE:

6' PEDESTAL KIT 2.4m-3.7m
(SCHEDULE 80 PIPE)

DRAWN BY

JK

MATERIAL

-

DWG. PURPOSE

INST

DATE

09/26/14

FINISH

-

SHEET

1 OF 2

SCALE

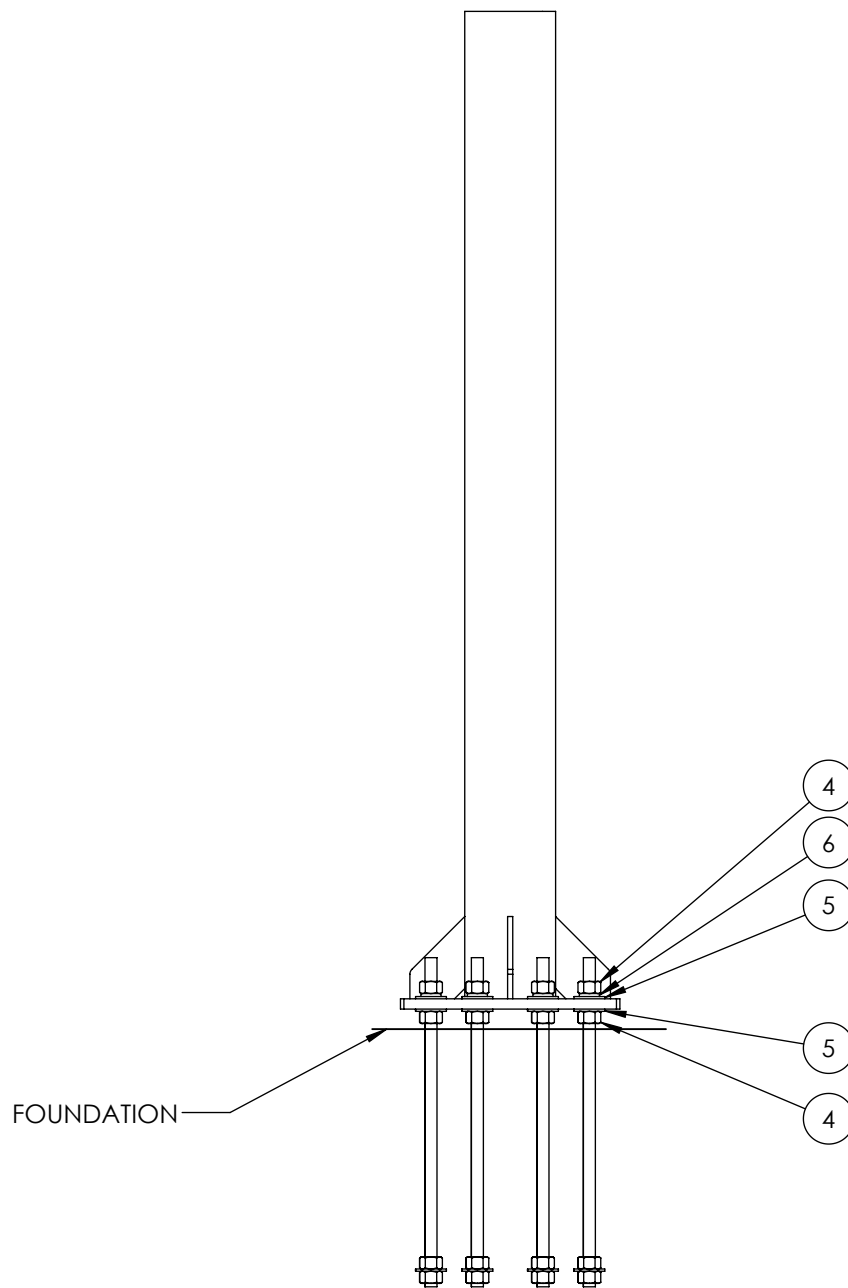
-

PART. NO.

PK(000)HX6BC125C1

DWG. NO.

PK(000)HX6BC125C1 INST



Remove the wood template after the concrete has cured. Clean the exposed threads and turn a nut all the way down to the top of the concrete on each rod. Set the pedestal and tighten hardware. See the drawing above.

PROPRIETARY AND CONFIDENTIAL

THE INFORMATION CONTAINED IN THIS DRAWING IS THE SOLE PROPERTY OF BAIRD SUPPORTING SYSTEMS. ANY REPRODUCTION IN PART OR AS A WHOLE WITHOUT THE WRITTEN PERMISSION OF BAIRD SUPPORTING SYSTEMS IS PROHIBITED.



UNLESS OTHERWISE SPECIFIED:

DIMENSIONS ARE IN INCHES
TOLERANCES:
FRACTIONAL ±
ANGULAR: MACH ± BEND ±
TWO PLACE DECIMAL ±
THREE PLACE DECIMAL ±

DO NOT SCALE DRAWING

Distributed By: Viking Satcom

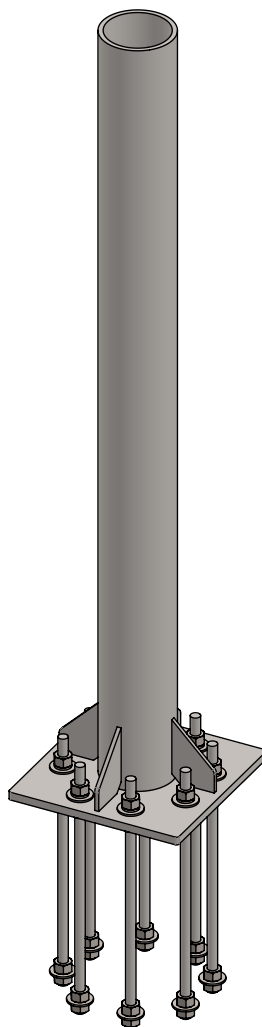
Albion, MI 49224
PHONE: 517-629-3000
SALES@VIKINGSATCOM.COM

TITLE:

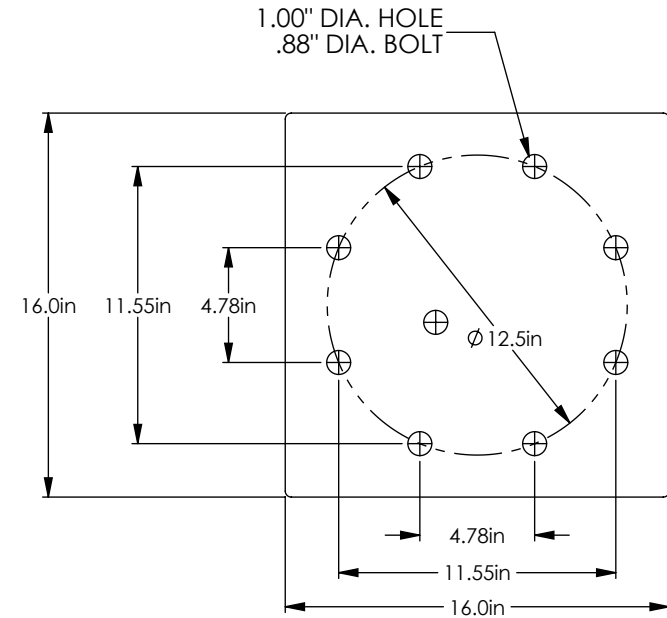
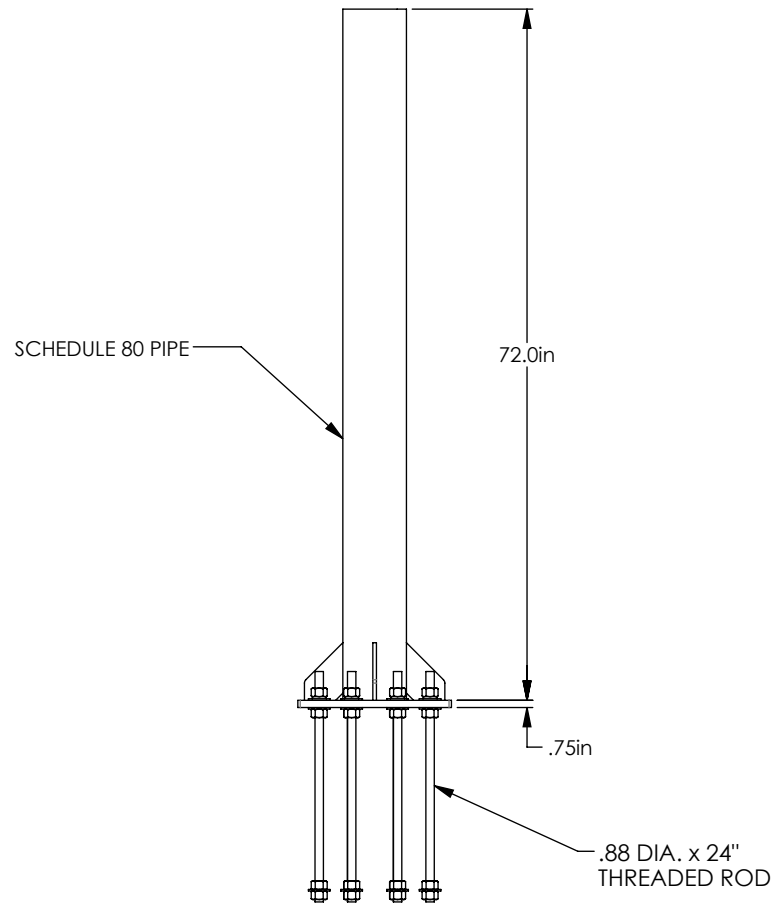
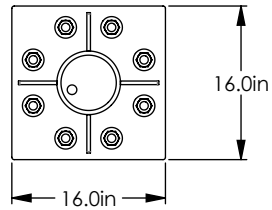
6' PEDESTAL KIT 2.4m-3.7m
(SCHEDULE 80 PIPE)

DRAWN BY JK	DATE 09/26/14	
MATERIAL	FINISH -	
DWG. PURPOSE INST	SHEET 2OF2	SCALE -
PART. NO. PK(000)HX6BC125C1		
DWG. NO. PK(000)HX6BC125C1 INST		

PART NO.	MAST DIAMETER	WEIGHT
PK550HX6BC125C1	5.50"OD	226 lbs.
PK662HX6BC125C1	6.62"OD	277 lbs.



<div>PROPRIETARY AND CONFIDENTIAL</div> <div>THE INFORMATION CONTAINED IN THIS DRAWING IS THE SOLE PROPERTY OF BAIRD SUPPORTING SYSTEMS. ANY REPRODUCTION IN PART OR AS A WHOLE WITHOUT THE WRITTEN PERMISSION OF BAIRD SUPPORTING SYSTEMS IS PROHIBITED.</div>	<div><div>BAIRD™</div><div>MOUNTING SYSTEMS</div></div>	UNLESS OTHERWISE SPECIFIED:	Distributed By: Viking Satcom		DRAWN BY		DATE	
		DIMENSIONS ARE IN INCHES	Albion, MI 49224		JK		06/13/13	
		TOLERANCES:	PHONE: 517-629-3000		MATERIAL		FINISH	
		FRACTIONAL ±	SALES@VIKINGSATCOM.COM		STEEL		HDG	
		ANGULAR: MACH ± BEND ±			DWG. PURPOSE		SHEET	
TWO PLACE DECIMAL ±			CUSTOMER		1OF2		SCALE	
THREE PLACE DECIMAL ±							-	
DO NOT SCALE DRAWING			DESCRIPTION:		PART. NO.			
			6' PEDESTAL KIT 2.4m-3.7m		SEE TABLE			
			(SCHEDULE 80 PIPE)		DWG. NO.			
					PK(000)H-6BC125C1			



BASE PLATE DETAIL

PROPRIETARY AND CONFIDENTIAL

THE INFORMATION CONTAINED IN THIS DRAWING IS THE SOLE PROPERTY OF BAIRD SUPPORTING SYSTEMS. ANY REPRODUCTION IN PART OR AS A WHOLE WITHOUT THE WRITTEN PERMISSION OF BAIRD SUPPORTING SYSTEMS IS PROHIBITED.



UNLESS OTHERWISE SPECIFIED:

DIMENSIONS ARE IN INCHES
TOLERANCES:
FRACTIONAL ±
ANGULAR: MACH ± BEND ±
TWO PLACE DECIMAL ±
THREE PLACE DECIMAL ±

DO NOT SCALE DRAWING

Distributed By: Viking Satcom

Albion, MI 49224
PHONE: 517-629-3000
SALES@VIKINGSATCOM.COM

DESCRIPTION:

6' PEDESTAL KIT 2.4m-3.7m
(SCHEDULE 80 PIPE)

DRAWN BY JK	DATE 06/10/13
MATERIAL STEEL	FINISH HDG
DWG. PURPOSE CUSTOMER	SHEET 2OF2
PART. NO. SEE TABLE-SHEET 1	SCALE -
DWG. NO. PK(000)H-6BC125C1	