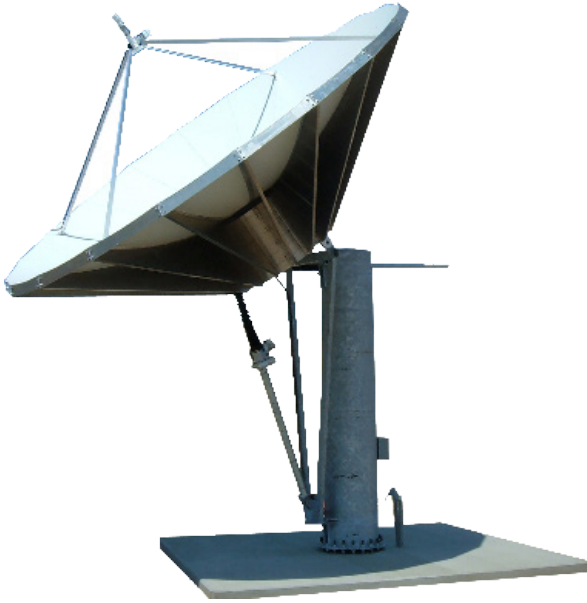


6.3 Meter Prime Focus Receive Only Antenna



Your Trusted Source for Satellite Equipment



**VS-630AZKP
VS-630DAKP**

- **High Accuracy Stretch-formed Aluminum Panels**
- **Factory Assembled Mount Reduces Installation Time**
- **Contoured petals with matched radial beams and hub assembly ensure easy installation without field alignment.**
- **Fixed and Motorized Mounts**

ELECTRICAL SPECIFICATIONS		
	C-Band	Ku-Band
Receive Frequency in GHz	3.625 - 4.2	10.95 - 12.75
Midband Gain	46.4 dBi	55.7 dBi
Noise Temperature	48 K @ 10°	53 K @ 30°
Ports/Polarization	1 or 2 port Circular 1 or 2 port Linear	1 or 2 port Linear
Polarization Rotation	360° Continuous	360° Continuous
VSWR	Rx 1.4:1	Rx 1.4:1
Feed Flanges	Rx CPR 229G	Rx WR75

MECHANICAL SPECIFICATIONS	
Antenna Diameter	6.3m
Azimuth Travel	120° Standard
Elevation Travel	0° to 90° Standard
Drive System: Elevation	Mechanical Screw Jack Standard
Drive System: Azimuth	Mechanical Screw Jack Standard
Mount Type	Tube Pedestal
Structure Material & Finish	Hot Dip Galvanized Steel
Reflector Material & Finish	Aluminum w/high diffusive white Powder Coat finish on reflective surface
ENVIRONMENTAL SPECIFICATIONS	
Wind Load Operational Survival	45 mph (72 km/h); gusts to 60 mph (97 km/h) 125 mph (200 km/h) @ 58°F (15°C)
Temperature Operational Survival	+5° to +122°F (-15° to 50°C) -22° to +140°F (-30° to +60°C)

RECEIVE-ONLY_VS-630AZKP_VS-630DAKP_REV006
Specifications are subject to change without notice

sales@vikingsatcom.com • www.vikingsatcom.com

T: 517.629.3000 • F: 517.629.2379 • 704 North Clark Street • Albion, MI