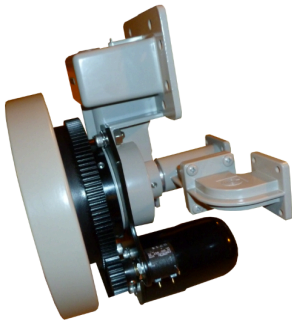


Prime Focus Feed Systems (Rx ONLY)

	Dual Band C/Ku	Dual Band C/Ku	Dual Band C/Ku	Dual Band C/Ku	Dual Band C/Ku	Dual Band C/Ku	Dual Band C/Ku
	Linear Motorized	Linear Fixed	Linear Motorized	Linear Fixed	C-Circular Ku-Linear Motorized	C-Circular Ku-Linear Fixed	Linear Motorized
Part #	FEED-4CKU-MOTO	FEED-4CKU	FEED-4CKU-MOTO-WB	FEED-4CKU-WB	FEED-4CCKU-MOTO	FEED-4CCKU	FEED-2CKU
f/D Range	0.390 - 0.420	0.390 - 0.420	0.390 - 0.420	0.390 - 0.420	0.390 - 0.420	0.390 - 0.420	0.320 - 0.450
Rotation (deg)	250 W/Mech stops	360 Continuous	250 W/Mech stops	360 Continuous	250 W/Mech stops	360 Continuous	360 Continuous
Polarities	C-Linear Ku Linear	C-Linear Ku-Linear	C-Linear Ku-Linear	C-Linear Ku-Linear	C-Circular Ku-Linear	C-Circular Ku-Linear	C-Linear Ku-Linear
Rx Port	CPR229, WR75	CPR229, WR75	CPR229, WR75	CPR229, WR75	CPR229, WR75	CPR229, WR75	CPR229, WR75
Polarization Operation	24 VDC Motor	Manual	24 VDC Motor	Manual	24 VDC Motor	Manual	5 VDC SERVO
Weight (lbs)	5.5 LBS	3.5 LBS	5.5 LBS	3.5 LBS	5.5 LBS	3.5 LBS	3.1 LBS
Rx Band (GHz)	C-3.7-4.2, Ku-11.7-12.75	C-3.7-4.2, Ku-11.7-12.75	C-3.7-4.2, Ku-10.95-12.75	C-3.7-4.2, Ku-10.95-12.75	C-3.7-4.2, Ku-10.95-12.75	C-3.7-4.2, Ku-10.95-12.75	C-3.7-4.2, Ku-11.7-12.75
Rx Return Loss (dB)	C-13 Ku-15	C-13 Ku-15	C-13 Ku-15	C-13 Ku-15	C-13 Ku-15	C-13 Ku-15	C-17 Ku-17
Isolation (Rx Band) (dB) (TYP)	C-18 Ku-25	C-18 Ku-25	C-18 Ku-25	C-18 Ku-25	C-15 Ku-25	C-15 Ku-25	N/A
X-Pol (LP), Axial Ratio (CP) (dB)	C-18 Ku-25	C-18 Ku-25	C-18 Ku-25	C-18 Ku-25	C-3 Ku-25	C-3 Ku-25	C-20> Ku-20>
Number of Ports	2-C 2-Ku	2-C 2-Ku	2-C 2-Ku	2-C 2-Ku	2-C 2-Ku	2-C 2-Ku	1-C 1-Ku



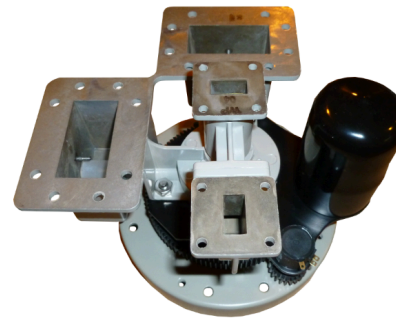
FEED-4CKU-MOTO

DUAL BAND C/Ku
LINEAR MOTORIZED



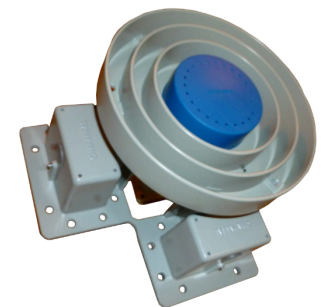
FEED-4CKU

DUAL BAND C/Ku
LINEAR FIXED



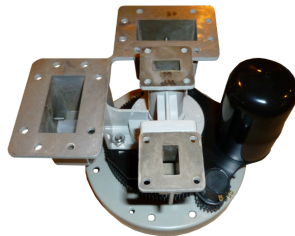
FEED-4CKU-MOTO-WB

DUAL BAND C/Ku
LINEAR MOTORIZED



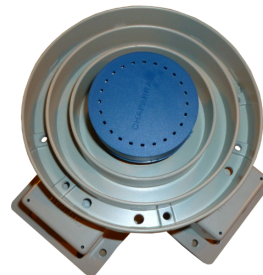
FEED-4CKU-WB

DUAL BAND C/Ku
LINEAR FIXED



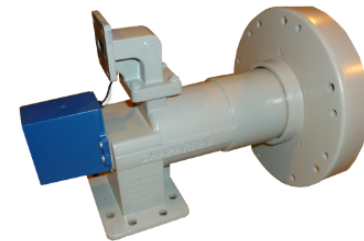
FEED-4CCKU-MOTO

DUAL BAND C/Ku
C-CIRCULAR, KU-LINEAR
MOTORIZED



FEED-4CCKU

DUAL BAND C/Ku
C-CIRCULAR, KU-LINEAR
FIXED



FEED-2CKU

DUAL BAND C/Ku
LINEAR MOTORIZED

VS025001_REV003
Specifications are subject to change without notice

T: 517.629.3000
F: 517.629.2379

Viking SATCOM
www.vikingsatcom.com

704 North Clark Street
Albion, Michigan USA



Prime Focus Feed Systems (Rx ONLY)

	Single C-Band Linear	Dual C-Band linear	Single C-Band Lin or Circ	Dual C-Band Lin or Circ	Single Ku Band Linear	Dual Ku Band Linear	
	Linear Fixed	Linear Fixed	Linear / Circular Fixed	Linear / Circular Fixed	Linear Fixed	Linear Fixed	
Part #	Feed-VS-SUPER	FEED-1329	FEED-ADL-RP3-CP300	FEED-ADL-RP3CPOR1	FEED-ADL-KU850	FEED-ADL-KU901	Feed-VS-PRT-PFLNBF
f/D Range	0.330 - 0.450	0.330 - 0.450	0.335 - 0.425	0.335 - 0.425	0.335 - 0.425	0.335 - 0.425	0.335 - 0.425
Rotation (deg)	360 Continuous	360 Continuous	360 Continuous	360 Continuous	360 Continuous	360 Continuous	360 Continuous
Polarities	C-Linear	C-Linear	C-Linear or C-Circular	C-Linear or C-Circular	Ku Linear	Ku Linear	Ku Circular
Rx Port	CPR229	CPR229	CPR229	CPR229	WR75	WR75	F Connector
Polarization Operation	Manual	Manual	Manual	Manual	Manual	Manual	Manual
Weight (lbs)	1.43 lbs.	2.23 lbs.	3.75 lbs.	5 lbs.	1 lb	1 lb	1 lb
Rx Band (GHz)	3.7 - 4.2 GHz	3.7 - 4.2 GHz	3.4 - 4.2 GHz	3.4 - 4.2 GHz	10.7 - 12.75 GHz	10.7 - 12.75 GHz	12.2 - 12.7 GHz
Rx Return Loss (dB) (TYP)	14db	14db	17dB / 20dB	17dB / 20dB	20 dB	15 dB	N/A
Isolation (Rx Band) (dB) (TYP)	N/A	45dB	N/A	32dB	N/A	40 dB	N/A
X-Pol (LP), Axial Ratio (CP) (TYP)	20dB	35dB	25dB/< 2dB	25dB/< 2dB	35 dB	37 dB	N/A
Number of Ports	1-C	2-C	1-C	2-C	1 Ku	2 Ku	2 F



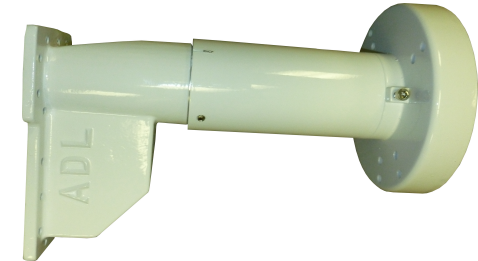
Feed-VS-SUPER
Single C-Band Linear



Feed-1329
Dual C-Band Linear



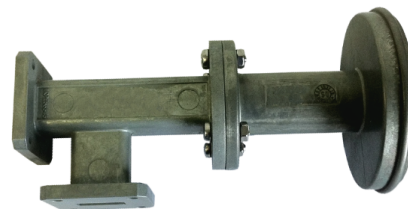
Feed-VS-RP3CP300
Single C-Band Linear/Circular



Feed-VS-RP3CPOR1
Dual C-Band Linear / Circular



Feed-ADL-KU850
Single Ku Band Linear



Feed-ADL-KU901
Dual Ku-Band Linear



Feed-VS-PRT-PFLNBF
Ku-Band Circular DBS

VS025002_REV006
Specifications are subject to change without notice

T: 517.629.3000
F: 517.629.2379

Viking SATCOM
www.vikingsatcom.com
sales@vikingsatcom.com

704 North Clark Street
Albion, MI USA