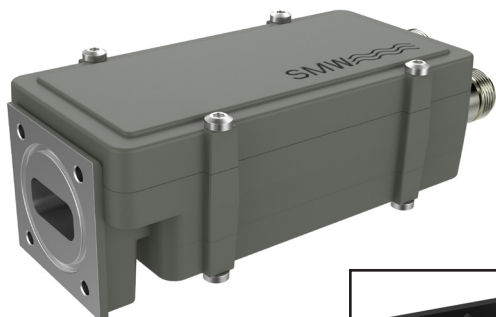


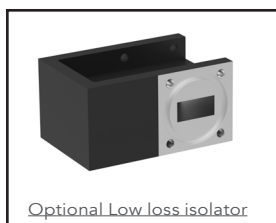
Wideband PLL LNB



Wideband, extended IF,
output PLL LNB for
simultaneous reception
of full Ku-Band



DVB-S2X



The Wideband output LNB supports reception of full Ku-Band with 1 LO and 1 Extended IF Output 950-3000 MHz, 950-2750 MHz or 290 - 2340 MHz.

Features

- Full Ku-Band coverage with 1 LO and 1 output
- Standard Ultra Low Phase Noise meets all profiles of DVB-S2X
- High P1dB and IP3
- Choose between Internal Ref. or External Ref. input models
- Available as TWIN for H/V reception
- 10.41 model acc. to ASTRA Wideband spec.
- Lower gain versions for larger antennas
- Wide operating temperature range

The Ultra Low Phase Noise "ULPN" is recommended* for:

DVB-S2: - Narrowband 8PSK 8/9 and 9/10 FEC
- 16 APSK or higher modulation type (any bandwidth)
- All applications with "Pilot Off"

DVB-S2X: All "MODCODS" and symbol rates
NS3/NS4: All "MODCODS" and symbol rates

* Please note that these are general recommendations and that all other system components also will influence system performance.

TECHNICAL SPECIFICATIONS

MODEL:	9.75 GHz Wideband		10.00 GHz Wideband		10.41 GHz Wideband	
Input Frequency	10.70 - 12.75 GHz		10.95 - 12.75 GHz		10.70 - 12.75 GHz	
LO Frequency	9.75 GHz		10.00 GHz		10.41 GHz	
Output Frequency	950 - 3000 MHz		950 - 2750 MHz		290 - 2340 MHz	
Gain	60 dB typ., (55 dB min)					
Flatness	±0.4dB max. in 30 MHz, ±3 dB max. over band					
Noise Figure / Noise Temperature	0.8 dB / 59 K typ.					
Phase Noise typ.	-35 dBc @ 10 Hz	-65 dBc @ 100 Hz	-82 dBc @ 1 kHz	-94 dBc @ 10 kHz	-98 dBc @ 100 kHz	-120 dBc @ ≥1MHz, typ.
Image Rejection	40 dB min.					
Output P1dB	+15 dBm typ.					
Output IP3	+25 dBm typ.					
Output VSWR	2.1:1 typ.					
Output Connector	N-type 50Ω / SMA-type 50Ω			N-type 50Ω / SMA-type 50Ω / F-type 75Ω		
Input Waveguide	WR 75 / R 120. Flange PBR 120					
Input VSWR	2.3:1 typ., with optional isolator 1.25:1 max.					
LO Leakage	-60 dBm @ waveguide input					
MODELS with Internal Reference	±10 kHz -20 to +70°C (±15 kHz -40 to +80°C)					
MODELS with External 10 MHz Reference	Sine Wave, Level: -10 to +10 dBm. Supplied through the output connector (with no ext. 10 MHz ref. present LO shifts -20 ppm)					
DC Input	+15 to +26 V supplied through output connector.					
Current Drain	160 mA @ +20 V 180 mA @ +18 V 200 mA @ +16 V					
Temperature Range	Storage and operating: -40 to +80°C					
Dimensions	128 x 57 x 46 mm (N-connector), for drawing, see www.smw.se					
Weight	329 g (SMA-connector), 345 g (N-connector)					
Options	Customized LO, Lower gain and variation, Separate DC input connector F-, N- or SMA-type, 10 MHz ref. input connector (SMA, F or N), Twin-LNB with OMT + bend and protecting cover, Pressurizable 0.1 bar max.					
Miscellaneous	Enclosed conductive O-ring, mounting screws (M4 x 10) 4 pcs.					
SEE THE RF OVER FIBER AND L-BAND SECTIONS FOR OUTPUT OPTIONS						

Rev.08-21-4G

Above parameters are generic product family values. For part number specific min./max. values, please consult us.

Specifications are subject to change without notice. Products from Swedish Microwave AB are made for commercial use.

Swedish Microwave AB, Dynamov. 5, S-591 61 Motala, Sweden. Tel: +46 141 216135, sales@smw.se, www.smw.se