

# Ka LNB 17.70-21.20 GHz 1-2 Band Wideband

## Key features



- Auto LO Ext. ref. 10 MHz, fallback to Internal ref.
- Excellent Phase noise meets all profiles of DVB-S2X.
- 2-Band switchable as option
- Wide operating temperature range
- Alarm and Monitoring & Control as standard



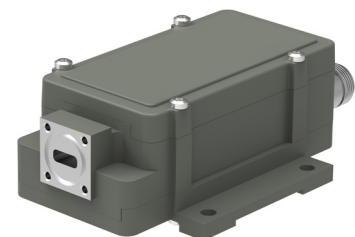
### Description

The Ka-Band wideband PLL LNB is the choice for reception of one or two wide sub-bands in the Ka Receive band 17.70 to 21.20 GHz. With an IF of 950-3450 MHz you cover 17.70 to 20.20 GHz or/and 18.70 to 21.20 GHz. The switchable 2-band is optional.

SMW also offers Single band and 2 to 8 Multi-LO/sub-band switchable models, Ka Transmit band monitoring LNBs/BDCs/TLTs and LNA+BDCs systems for up to full Ka-Band simultaneous reception, with the same excellent performance and useful features.

Standard products include the daisy-chainable SMW M&C interface (RS-485/Modbus RTU) and Alarm output.

Optional Enclosure with additional fixing point and Waveguide input isolator for exceptional input matching.

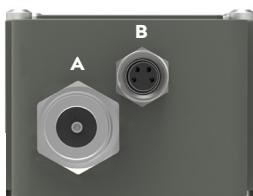


Optional enclosure fixing points



Optional Low loss isolator, VSWR 1.35:1 max.

#### LNB connectors (standard)



##### Connector A (standard)

Type: N-f, (option F-f or SMA-f)

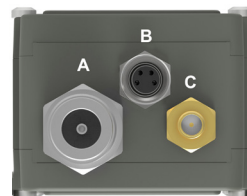
Functions: L-Band out, DC in, External 10 MHz in

##### Connector B (standard)

Type: M8 female, 4 pin, A-coded

Functions: Alarm and M&C

#### LNB connectors (optional)



##### Connector C (optional)

Type: SMA-f only

Functions: Ext. 10 MHz in and/or DC input

#### Connector B (standard)



- 1 = Alarm open collector (max. 200 mA) or optionally DC input.
- 2 = A pos+ RS485
- 3 = B neg- RS485
- 4 = Common (GND)
- 5 = Shield



Explore our full product range in this category



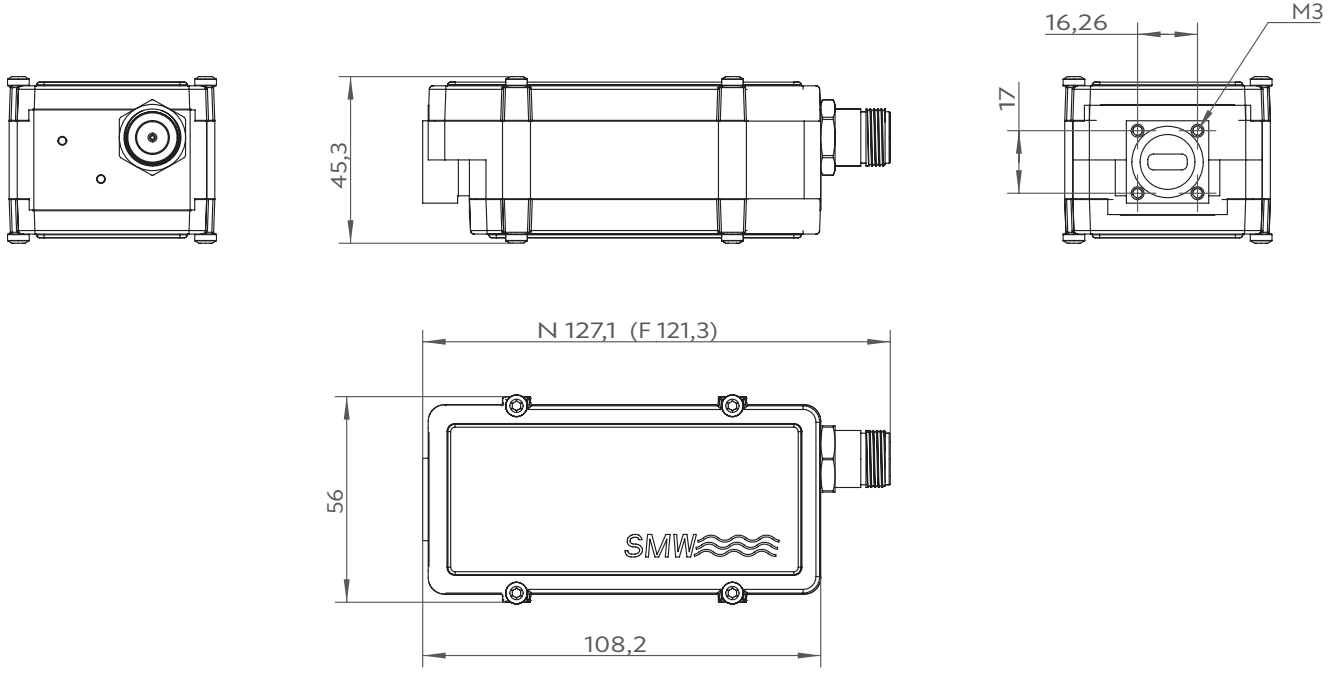
# Ka LNB 17.70-21.20 GHz 1-2 Band Wideband

## Technical specifications

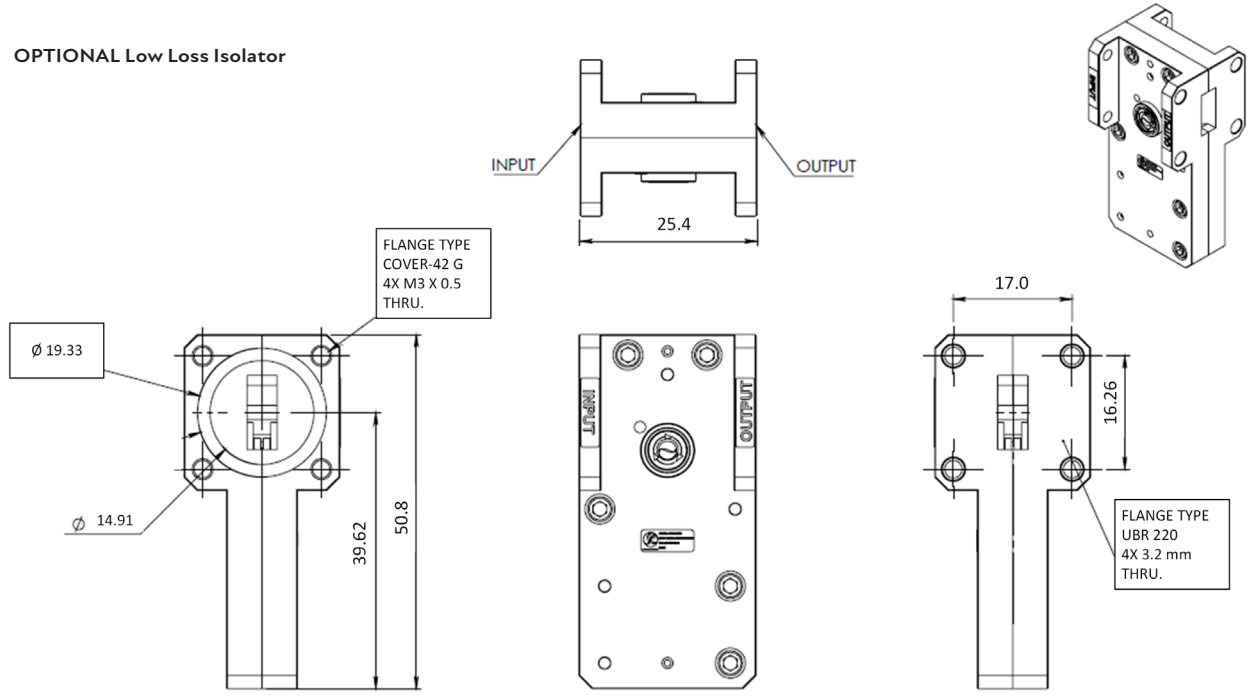
	MODELS/LO	16.75 GHz	17.75 GHz	18.25 GHz
	Input frequency	17.70 - 20.20 GHz	18.70 - 21.20 GHz	19.20-21.20 GHz
	LO frequency	16.75 GHz	17.75 GHz	18.25 GHz
INPUT	Input	Flange PBR220, waveguide WR42 / R 220		
	Pressurizable	0.1 bar max. (option)		
	Input max power	0 dBm instantaneous (not continuous)		
	DC Input	+11 to +26 V through output connector or separate SMA connector (optional), power consumption 6W max. Optional Band switching: 13 (11.5 to 14.0V) / 18V (16.0 to 26 .0V) or 22 kHz Tone (optional via Monitoring & Control)		
	Input VSWR	2.3:1 typ., optional 1.35:1 max. with Low Loss Isolator		
INTERNAL	LO ref.	External 10 MHz ref. with fallback to Internal ±30 ppm -40 to +80°C		
	External LO ref.	Sine wave, Level -10 to +10 dBm. Supplied through output connector. Frequency stability with Ext. reference is less then 10 Hz from the Reference source.		
	LO Leakage	-60 dBm max. @ waveguide input		
	Gain	55 dB typ.		
	Flatness	±0.4 dB within 30 MHz, ±3.0 dB max. full band		
	Noise figure	1.3 dB / 101 K typ.	1.4 dB / 110 K typ.	
	Phase Noise	-40 dBc @ 10 Hz -70 dBc @ 100 Hz -86 dBc @ 1 kHz -94 dBc @ 10 kHz -99 dBc @ 100 kHz -105 dBc @ 1 MHz -125 dBc @ >10 MHz max.		
	Group delay	± 1ns max.		
	Out of band rejection	20 dB min.		
	Image Rejection	30 dB min.	> 20 dB	> 20 dB
OUTPUT	IF output	950 - 3450 MHz	950 - 3450 MHz	950-3000MHz
	Output P1dB	+14 dBm min.		
	Output IP3	+24 dBm min.		
	Output VSWR	2.3:1 typ.		
	Output Connector	N-type 50Ω , option SMA-type 50Ω		
GENERAL	Alarm	Sum alarm, set via M&C to alarm in any combination of: LNA failure, Total current, LO lock (Ext/Int/n/a), signal power high/low, Supply voltage low. Open collector 3.3 to 28 V, max. 200 mA (pullup 10 k Ohm at host side), pin 1 in M8 connector.		
	M&C	Via MODBUS RTU RS485 electrical interface, see document <a href="#">Monitoring and Control technical interface</a> for details. NOTE! Mates with M8 male connector/Cable, use only shielded CAT 5 cables		
	Dimensions	127x56x46 mm (N-connector), 121x56x44 mm (SMA connector), without Low loss isolator		
	Weight	345 g (N-connector), 326 g (SMA-connector)		
	MTBF	MTBF as per MIL-HDBK-217F Notice 2: Environmental Condition GF (Ground Fixed): >690000 hours, Environmental Condition AIC (Airborne, Inhabited, Cargo): >360000 hour, Quality level: Commercial, Temperature used for MTBF calculation: +35°C Ambient		
	Temperature range	Storage and operating: -40 to +80°C, -40 to +176°F		
	Miscellaneous	Enclosed conductive O-ring, mounting screws (M3 x 8) 4 pcs		
OPTIONS	Options	<div>- Separate SMA connector for DC input and/or Ext. 10 MHz reference</div> <div>- 2-band switching (Legacy 13/18V or 22 kHz tone or optional via Monitoring &amp; Control</div> <div>- Customized gain</div> <div>- Low loss isolator</div> <div>- Enclosure fixing points</div>		

# Ka LNB 17.70-21.20 GHz 1-2 Band Wideband

## Technical Drawing



### OPTIONAL Low Loss Isolator



Professional Satcom Frequency Converters & Components. All products are fully CE and RoHS compliant and every unit includes full documentation of performance tests and quality control. Please contact [sales@smw.se](mailto:sales@smw.se) to configure or customize the unit to your needs. Visit [smw.se](http://smw.se) or scan QR code to see our full product range and request a quote.



Technical specifications are typical, for specific part number specifications, please contact us. Specifications are subject to change without prior notice. Products from Swedish Microwave AB are made for commercial use.  
Swedish Microwave AB | Dynamovägen 5 | S-591 61 Motala | Sweden | Contact: +46 141 21 61 35 | [sales@smw.se](mailto:sales@smw.se) | [smw.se](http://smw.se)