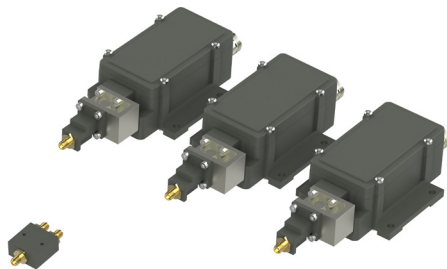


# Triple System

## Key features



HF cables and DC cable included



- Auto LO ref Ext. 10 MHz / Internal  $\pm 2.5$  ppm
- High P1dB and IP3
- Excellent Phase noise meets all profiles of DVB-S2X.
- Customized LO as option
- Alarm and Monitoring & Control as option

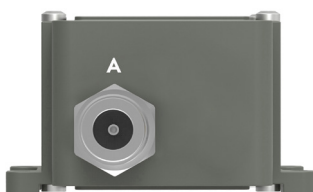


## Description

The Ka-Band Triple System provides coverage of the Ka receive band. The system consists of Ka LNA Wideband with waveguide isolator, Ka BDC's with waveguide isolators and matched HF cables. Excellent Phase Noise to support all profiles of DVB-S2X services.

Options include customized LO, customized frequency ranges, customized gain, separate DC power input and separate input for the external 10 MHz reference. As an option the SMW M&C interface provides possibility to daisychain several units in one Modbus RTU RS485 network for the optional Alarm and Monitoring & Control functionality.

BDC connector (standard)

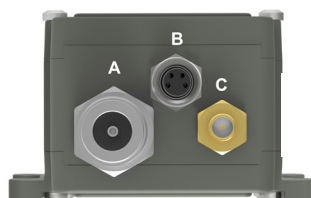


**Connector A (standard)**

Type: N-f, (option F-f or SMA-f)

Functions: L-Band out, DC in, External 10 MHz in

BDC connectors (optional)



**Connector B (optional)**

Type: M8 female, 4 pin, A-coded

Functions: Alarm and M&C

Connector B (optional)



- 1 = Alarm open collector (max. 200 mA) or optionally DC input.
- 2 = A pos+ RS485
- 3 = B neg- RS485
- 4 = Common (GND)
- 5 = Shield

**Connector C (optional)**

Type: SMA-f only

Functions: Ext. 10 MHz in and/or DC input

# Triple System

## Technical specifications

MODEL		17.70 - 21.30 GHz					
INPUT	Input frequency	BDC 1: 17.70-18.90 GHz		BDC 2: 18.90-20.10 GHz		BDC 3: 20.10-21.30 GHz	
	LO frequency	BDC 1: 16.75 GHz		BDC 2: 17.95 GHz		BDC 3: 19.15 GHz	
	Input LNA	Waveguide WR 42 / R 220. Flange PBR 220.					
	Input BDC	SMA female 50Ω					
	DC Input BDC	+12 to +24 V through output connector or separate SMA connector (optional), power consumption 5W typ.					
	DC input LNA	+12 to +24 V / 110 mA typ. Supplied through separate SMA connector via included DC cable, mated from BDC # 1					
	Input VSWR LNA	1.35:1 max. with Isolator (included)					
INTERNAL	LO ref.	Auto LO ref. External 10 MHz ref / Internal ±2.5 ppm -40 to +80°C					
	External LO ref.	Sine wave, Level -10 to +10 dBm. Supplied through output connector.					
	LO Leakage	-60 dBm max. @ RF input					
	Gain	60 dB typ. (55dB min.)					
	Flatness	±0.4 dB within 30 MHz, ±2 dB max. over each band					
	Noise figure	1.8 dB / 149 K typ.					
	Phase Noise	-35 dBc @ 10 Hz   -65 dBc @ 100 Hz   -80 dBc @ 1 kHz   -85 dBc @ 10 kHz   -95 dBc @ 100 kHz   -112 dBc @ >1 MHz typ.					
OUTPUT	Image Rejection	30 dB min.					
	IF output	950-1950 MHz, (950-2250 MHz optional)					
	Output P1dB	+ 15 dBm					
	Output IP3	+ 25 dBm					
	Output VSWR BDC	1.7:1 typ.					
	Output connector LNA	SMA-type 50Ω					
	Output Connector BDC	N-type 50Ω , SMA-type 50Ω or F-type 75Ω					
GENERAL	Alarm (option)	Sum alarm, set via M&C to alarm in any combination of: LNA failure, Total current, LO lock (Ext/Int/n/a), signal power high/low, Supply voltage low. Open collector 3.3 to 28 V, max. 200 mA (pull-up 10 k Ohm at host side), pin 1 in M8 connector.					
	M & C (option)	Via MODBUS RTU RS485 electrical interface, see document <a href="#">Monitoring and Control technical interface</a> for details. NOTE! Mates with M8 male connector/Cable, use only shielded CAT 5 cables					
	Dimensions LNA	103 x 63 x 34 mm, including isolator					
	Dimensions BDC	178 x 80 x 46 mm (F- & SMA-connector)   184 x 80 x 46 mm (N-connector) ( for drawing, see <a href="#">www.smw.se</a> )					
	Weight LNA	160 including isolator					
	Weight BDC	399 g (F- & SMA-connector)   418 g (N-connector)					
	Temperature range	Storage and operating: -40 to +80°C, -40 to +176°F					
OPTIONS	Options	Separate SMA connector on BDC for DC input or Ext. 10 MHz reference Alarm and Monitoring & Control Customized gain Customized LO Extended IF					

# Triple System

## Example and wiring diagram

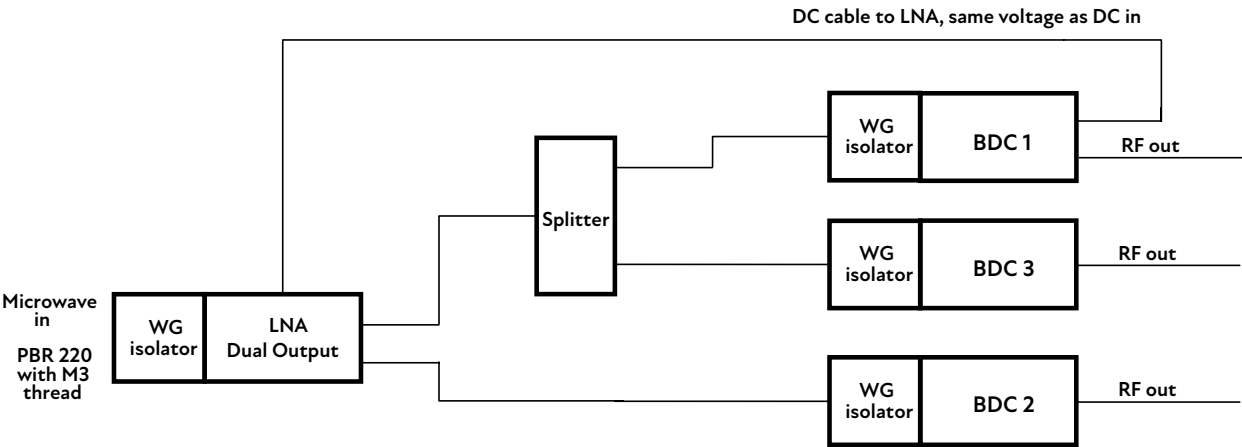
Example Ka-Band Triple System configurations					
P/N (x = connector type F, N or SMA)	Frequency range (GHz)	BDC	LO	Ka-band (GHz)	L-band (MHz)
55751x-V02 Auto LO ref. Ext. 10 MHz/Int.±2.5 ppm	17.70 - 21.30	1	16.75	17.70-18.90	950-2150
		2	19.15	20.10-21.30	950-2150
		3	17.95	18.90-20.10	950-2150
55741x-V02 Auto LO ref. Ext. 10 MHz/Int.±2.5 ppm	17.30 - 20.90	1	16.35	17.30-18.50	950-2150
		2	18.75	19.70-20.90	950-2150
		3	17.55	18.50-19.70	950-2150

NOTE P/N: x = "0" for F connector, "5" for N connector and "8" for SMA connector

### Ka Triple Band system

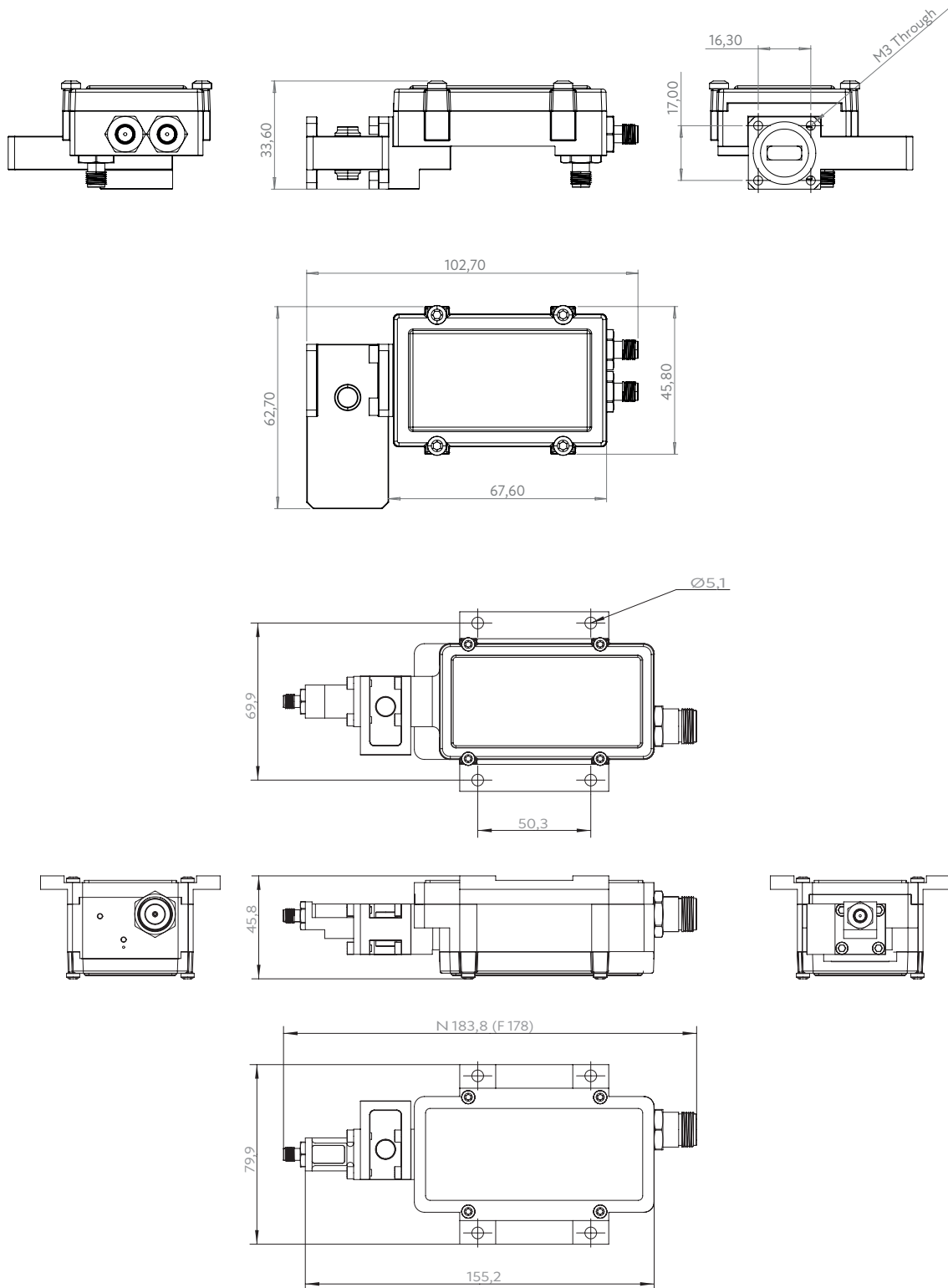
NOTE1: Cable lengths are fixed due to best performance of this sytem.  
If other cable lengths are needed, please contact us first.

NOTE2: Frequency bands are not in order for BDC 2 & 3.



# Triple System

## Technical Drawing



Professional Satcom Frequency Converters & Components. All products are fully CE and RoHS compliant and every unit includes full documentation of performance tests and quality control. Please contact [sales@smw.se](mailto:sales@smw.se) to configure or customize the unit to your needs. Visit [smw.se](http://smw.se) or scan QR code to see our full product range and request a quote.

